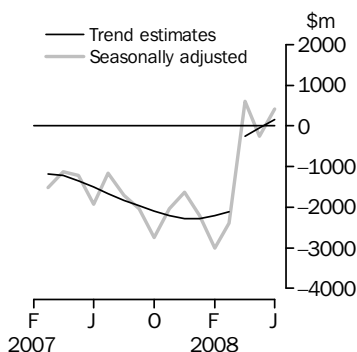


INTERNATIONAL TRADE IN GOODS AND SERVICES

AUSTRALIA

EMBARGO: 11.30AM (CANBERRA TIME) THURS 31 JUL 2008

Balance on Goods and Services



(a) A trend break of \$1,685m has been applied to April 2008.

KEY FIGURES

	April 2008	May 2008	June 2008	May 08 to Jun 08 %
	\$m	\$m	\$m	change
BALANCE ON GOODS AND SERVICES				
Trend estimates	-253	-42	158	..
Seasonally adjusted	607	-253	411	..
CREDITS (Exports of goods & services)				
Trend estimates	21 905	22 367	22 773	2
Seasonally adjusted	22 169	22 595	23 049	2
DEBITS (Imports of goods & services)				
Trend estimates	22 158	22 408	22 614	1
Seasonally adjusted	21 561	22 848	22 638	-1

.. not applicable

KEY POINTS

BALANCE ON GOODS AND SERVICES

- The trend estimate of the *balance on goods and services* was a surplus of \$158m in June 2008, a turnaround of \$200m on a revised deficit in May 2008.
- In seasonally adjusted terms, the *balance on goods and services* was a surplus of \$411m in June 2008, a turnaround of \$664m on a revised deficit in May 2008.
- The seasonally adjusted surplus was primarily due to the strong rise in *goods and services credits*, mainly in *non-rural and other goods*.

CREDITS (EXPORTS OF GOODS & SERVICES)

- Seasonally adjusted, *goods and services credits* rose \$454m (2%) to \$23,049m. *Non-rural and other goods* rose \$509m (3%) while *rural goods* fell \$97m (4%). *Services credits* rose \$42m (1%).
- The rise in *non-rural and other goods* was driven by *coal, coke and briquettes*, which rose \$657m (21%).

DEBITS (IMPORTS OF GOODS & SERVICES)

- Seasonally adjusted, *goods and services debits* fell \$210m (1%) to \$22,638m. *Intermediate and other goods* fell \$472m (5%) and *consumption goods* fell \$102m (2%) while *capital goods* rose \$341m (9%). *Services debits* rose \$23m (1%).
- The fall in *intermediate and other goods* was driven by *fuels and lubricants*, which fell \$341m (11%) and *goods for processing*, which fell \$128m (91%).

INQUIRIES

For further information contact Selvi Sekhar on Canberra (02) 6252 5540 for goods, and Karen McGuigan on Canberra (02) 6252 5415 for services.

NOTES

FORTHCOMING ISSUES

<i>ISSUE</i>	<i>RELEASE DATE</i>
July 2008	4 September 2008
August 2008	2 October 2008
September 2008	5 November 2008
October 2008	4 December 2008
November 2008	8 January 2009
December 2008	3 February 2009



REVISIONS

Revisions were made to incorporate the latest available data relating to merchandise trade and the international trade in services. In original terms, these revisions have:

- turned around the deficit of goods and services for May 2008 by \$650m, resulting in a surplus of \$446m
- decreased the deficit on goods and services for the 11 months to May 2008 by \$1,280m.

In the June 2008 issue of Merchandise Imports, Australia (cat. no. 5439.0), preliminary analysis showed that goods debits decreased by 2% in seasonally adjusted terms. After incorporating additional information, final goods debits decreased by 1%.

IRON ORE AND COAL PRICES

Adjustments have been made to iron ore and coal exports in the Balance of Payments series. For details see page 4 – Commodity Prices Adjustment.

CHANGES IN FORTHCOMING ISSUE

Details of Major changes in July issue are provided on page 6 and details of Changes in Time Series Spreadsheets are provided on page 8.

Brian Pink
Australian Statistician

CONTENTS

page

Commodity prices adjustment	4
Major changes in July issue	6
Changes in time series spreadsheets	8
Time series data	9

ANALYSIS

Analysis and comments	10
---------------------------------	----

TABLES

INTERNATIONAL TRADE IN GOODS AND SERVICES – BALANCE OF PAYMENTS BASIS

1 Goods and services, summary, seasonally adjusted and trend estimates	15
2 Goods and services, summary, original	16
3 Goods credits, original	17
4 Goods debits, original	18
5 Goods credits, seasonally adjusted	19
6 Goods debits, seasonally adjusted	20
7 Goods credits, trend estimates	21
8 Goods debits, trend estimates	22
9 Services, summary, original	23
10 Services, summary, seasonally adjusted and trend estimates	24
11 Services, original, quarterly	25

INTERNATIONAL MERCHANDISE TRADE – RECORDED TRADE BASIS

12 International merchandise exports, by commodity	26
13 International merchandise imports, by commodity	29
14 International merchandise trade, by country and country groups	32
15 International merchandise trade, by state	33

OTHER TABLES

16 Period average exchange rates per Australian dollar	34
---	----

OTHER INFORMATION

Explanatory Notes	35
Appendix - Related articles	39

COMMODITY PRICES ADJUSTMENT

PRICES ADJUSTMENT

Exports data presented in tables 12 -15 of this publication are based on information reported by exporters to the Australian Customs Service (ACS). At the time of reporting the final prices may not be known for some commodities. Therefore, the information recorded for commodities like iron ore and coal can include prices ranging from levels consistent with contract prices that were set from 1 April 2007 to levels generally consistent with the prevailing spot prices. New contract price increases that have been recently negotiated, or are still being negotiated, are not fully reflected in the ACS source data. As with negotiated prices in previous years, it is expected that the increased prices obtained from the negotiation of new contracts will be updated progressively in recorded trade data back to 1 April 2008 as exporters revise the information provided to ACS.

The balance of payments data in this publication for April, May and June 2008 include adjustments for the anticipated price increases for iron ore and coal exports from 1 April. As progressive revisions to the recorded trade prices are provided to the ABS they will be incorporated into the balance of payments series. The adjustments are based on observed reporting patterns from previous increases in contract prices.

COAL

In the unadjusted recorded trade series, the unit price of coal increased by 28% between March quarter 2008 and April 2008. In the adjusted balance of payments series, prices for coal reflect a 57% increase. Quantities are the same in both series.

The following table shows the percentage increase in average unit value coal prices from March quarter 2008 to April, May and June 2008. The increases are shown for both the recorded trade series and the balance of payments (BoP) series which include the adjusted prices.

TABLE 1 INCREASE IN COAL PRICES FROM MARCH QUARTER 2008

	<i>April 2008</i>	<i>May 2008</i>	<i>June 2008</i>
	%	%	%
Hard Coking			
Recorded trade	22	44	98
BoP Basis	72	91	111
Semi Soft			
Recorded trade	45	94	115
BoP Basis	70	94	115
Thermal			
Recorded trade	22	28	37
BoP Basis	28	40	49
TOTAL			
Recorded trade	28	51	84
BoP Basis	57	77	95

An estimated trend break correction of \$960m has been applied in April 2008 to coal, coke and briquettes and related aggregates. As a minimum of three months are required for a trend break correction to be accurately estimated, the size of the trend break may be revised. Therefore, users should interpret the trend estimates for recent months with caution.

COMMODITY PRICES ADJUSTMENT *continued*

IRON ORE

The following table shows the percentage increase between average unit value iron ore prices from March quarter 2008 to April, May and June 2008. The increases are shown for both the recorded trade and BoP series.

TABLE 2 INCREASE IN IRON ORE PRICES FROM MARCH QUARTER 2008

	<i>April 2008</i>	<i>May 2008</i>	<i>June 2008</i>
	%	%	%
Iron Ore			
Recorded trade	20	20	21
BoP Basis	62	54	54

An estimated trend break of \$725m has been applied in April 2008 to metal ores and minerals and related aggregates.

MAJOR CHANGES IN JULY ISSUE

MAJOR CHANGES TO STATISTICS PRESENTED BY COMMODITY

From the July 2008 reference month, there will be major changes to the product classifications of statistics presented on both a Balance of Payments and a Recorded trade basis in this publication and related time series spreadsheets. The changes result from:

- replacing Standard International Trade Classification Revision 3 (SITC Rev 3) with Standard International Trade Classification Revision 4 (SITC Rev 4)
- updating the correspondences used to compile statistics on a Balance of Payments Broad Economic Category (BoPBEC), Balance of Payments Commodity of Exports (BoPCE) and Broad Economic Category (BEC) basis
- providing additional detail for transportation services credits and debits.

Statistics presented according to the updated correspondences will be known as BoPBEC Rev 1, BoPCE Rev 1 and BEC 2007, respectively.

The changes to be made to statistics presented on a Balance of Payments basis include:

- all goods data will be presented according to BoPBEC Rev 1 or BoPCE Rev 1 i.e. estimates will be recompiled on the basis of the revised correspondences to maintain consistency in the time series
- data for passenger and other transportation services will be further split into 'passenger transportation' and 'other transportation' services
- time series spreadsheet titles and data item descriptions will be modified to improve consistency.

These revisions will not change the total value of goods or services credits and debits.

The changes to be made to statistics presented on a recorded trade basis include:

- all data from July 2005 will be presented according to SITC Rev 4, BoPBEC Rev 1 and BEC 2007
- all data prior to July 2005 will be presented according to SITC Rev 3, BoPBEC and BEC
- therefore, a break in each of the series will occur between June 2005 and July 2005
- SITC Rev 4 free standing descriptors will be used to present data for all periods and care should be taken when using free standing descriptors to interpret data prior to July 2005
- time series spreadsheets will be modified to accommodate labels for SITC Rev 4 and, in some cases, titles and data item descriptions will be modified to improve consistency
- an error in the concordance between two petroleum tariff item statistical codes and related classifications was previously corrected back to July 2006. From the July 2008 issue, this correction will be extended back to July 2005 for good imports for the following classifications:
 - SITC Rev 4 item 33460 - Petroleum oils and oils obtained from bituminous minerals (other than crude) and preparations n.e.s., containing by weight 70 % or more of petroleum oils or of oils obtained from bituminous minerals, these oils being the basic constituents of the preparations, other than waste oils
 - BoPBEC Rev 1 item OK02 - motor spirit and item OK03 - other petroleum
 - BEC 2007 item 321 - Processed motor spirit and item 322 - Processed fuels and lubricants (excl. motor spirits).

These revisions will not change the total value of goods imports or exports or goods data by state or country.

MAJOR CHANGES IN JULY ISSUE *continued*

MAJOR CHANGES TO STATISTICS PRESENTED BY COMMODITY *continued*

Recorded trade data that will be made available on request on a consultancy basis from ABS Client Services will include:

- SITC Rev 3 basis for 2005–06 and 2006–07 (with SITC Rev 3 for earlier periods available from the relevant time series spreadsheets)
- BEC basis for 2005–06 and 2006–07 (with BEC for earlier periods available from the relevant time series spreadsheets).

For further details about the introduction of SITC Rev 4 and the impact on related classifications, refer to the *Information Paper: Impact of introducing Revision 4 of the Standard International Trade Classification, 2008* (cat. no. 5368.0.55.010).

Note: Two revisions have been made to this information paper. On 14 July in relation to a correspondence for BEC item 321 and on 25 July in relation to a correspondence for BoPBEC items CA07, OI00 and ON02. These changes impact on the data in Table 2.4 and Table 3.2, respectively.

SEASONALLY ADJUSTED AND TREND ESTIMATES

The seasonally adjusted and trend estimates of goods and services will be revised in the July 2008 issue of this publication as a result of the annual seasonal reanalysis. This reanalysis reviews the seasonal and trading day factors in more detail than is possible in the monthly processing cycle and assesses the appropriateness of any prior corrections. Annual reanalysis is usually undertaken for the September reference month but will be brought forward to coincide with the changes to commodity classifications mentioned above.

CHANGES IN TIME SERIES SPREADSHEETS

CHANGES IN TIME SERIES SPREADSHEETS Listed below are the Series IDs which will change in the Time Series Spreadsheets with the July 2008 issue.

TABLE 9 SERVICES, Summary: Original, Current prices

- Series ID A2282888T (Passenger and other services credits) and A2282893K (Passenger and other services debits) will be deleted and replaced with 4 new Series IDs:
 - A2493566A - Passenger transportation services credits
 - A2493567C - Other transportation services credits
 - A2493568F - Passenger transportation services debits
 - A2493569J - Other transportation services debits

TABLE 10 SERVICES, Summary: Seasonally adjusted and trend estimates, Current prices

- Seasonally adjusted - Series ID A612789F (Passenger and other services credits) and A612793W (Passenger and other services debits) will be deleted and replaced with 4 new Series IDs:
 - A2519168K - Passenger transportation services credits
 - A2519166F - Other transportation services credits
 - A2519167J - Passenger transportation services debits
 - A2519169L - Other transportation services debits
- Trend estimates - Series ID A612797F (Passenger and other services credits) and A612801K (Passenger and other services debits) will be deleted and replaced with 4 new Series IDs:
 - A2519170W - Passenger transportation services credits
 - A2519171X - Other transportation services credits
 - A2519172A - Passenger transportation services debits
 - A2519173C - Other transportation services debits

TABLE 12B MERCHANDISE EXPORTS: Standard International Trade Classification (3 digit), FOB Value

- A new series ID (to be advised in July 2008 issue) will be added in between A1828489R (Miscellaneous chemical products, nes) and A1828490X (Leather)

TABLE 13B MERCHANDISE IMPORTS: Standard International Trade Classification (3 digit), Customs Value

- A new series ID (to be advised in July 2008 issue) will be added in between A1828847C (Miscellaneous chemical products, nes) and A1828848F (Leather)

TABLE 91 MONTHLY COMBINED SEASONAL ADJUSTMENT FACTORS

- Series ID A2433248A (Services credits, Passenger and other) and A2433255X (Services debits, Passenger and other) will be deleted and replaced with 4 new Series IDs:
 - A2519174F - Services credits, Passenger transportation
 - A2519175J - Services credits, Other transportation
 - A2519176K - Services debits, Passenger transportation
 - A2519177L - Services debits, Other transportation

TIME SERIES DATA

TIME SERIES DATA

Data available free on the ABS web site <<http://www.abs.gov.au>> include longer time series of tables in this publication and additional spreadsheets and data cubes below:

- 31 Merchandise exports by Broad Economic Category (BEC)
- 32 Merchandise exports by industry of origin (ANZSIC)
- 33 Merchandise imports by Broad Economic Category (BEC)
- 34 Merchandise imports by Balance of Payments Broad Economic Category (BoPBEC)
- 35 Merchandise imports by industry of origin (ANZSIC)
- 36 Merchandise exports, state by country and country groups
- 37 Merchandise imports, state by country and country groups
- 91 Monthly seasonal adjustment factors and forward factors for 12 months.

TRADE IN SERVICES DATA CUBES

Data are usually updated on an annual basis - with the March issue of 5368.0 for calendar year and with the September issue for financial year.

*Financial year (cat. no.
5368.0.55.003)*

- 1 International trade in services, credits, state by financial year
- 2 International trade in services, credits, financial year by state
- 3 International trade in services, debits, state by financial year
- 4 International trade in services, debits, financial year by state
- 5 International trade in services, credits, financial year by country and service
- 6 International trade in services, credits, service by financial year and by country
- 7 International trade in services, debits, financial year by country and service
- 8 International trade in services, debits, service by financial year and by country
- 9 International trade in services, financial year by detailed service.

*Calendar year (cat. no.
5368.0.55.004)*

- 1 International trade in services, credits, state by calendar year
- 2 International trade in services, credits, calendar year by state
- 3 International trade in services, debits, state by calendar year
- 4 International trade in services, debits, calendar year by state
- 5 International trade in services, credits, calendar year by country and service
- 6 International trade in services, credits, service by calendar year and by country
- 7 International trade in services, debits, calendar year by country and service
- 8 International trade in services, debits, service by calendar year and by country
- 9 International trade in services, calendar year by detailed service
- 10 International trade in services, credits, calendar year by country and travel service
- 11 International trade in services, debits, calendar year by country and travel service.

ANALYSIS AND COMMENTS

BALANCE ON GOODS AND SERVICES

The trend estimate of the balance on goods and services in June 2008 was a surplus of \$158m, a turnaround of \$200m on the revised deficit in May 2008.

In seasonally adjusted terms, the balance on goods and services in June 2008 was a surplus of \$411m, a turnaround of \$664m on the revised deficit in May 2008.

The sum of the seasonally adjusted balances for the three months to June 2008 was a surplus of \$765m, a turnaround of \$8,378m on the deficit of \$7,613m for the three months to March 2008. However, if the seasonal factors used in compiling quarterly Balance of Payments are applied, the June quarter 2008 surplus was \$559m, a turnaround of \$7,872m on the revised March quarter 2008 deficit of \$7,313m.

2007–08 SITUATION

For 2007–08, the balance on goods and services was a deficit of \$17.9b. This is an increase of \$5.7b on the 2006–07 deficit resulting from a \$19.5b (9%) increase in exports offset by a \$25.2b (11%) increase in imports of goods and services.

Exports of non-rural and other goods were up \$14.2b (10%) and rural goods were up \$0.4b (2%) compared to 2006–07.

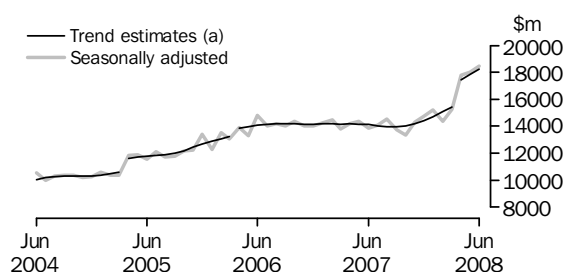
EXPORTS OF GOODS AND SERVICES

The trend estimate of goods and services credits rose \$406m (2%) between May and June to \$22,773m.

In seasonally adjusted terms, goods and services credits rose \$454m (2%) to \$23,049m. Non-rural goods rose \$529m (4%), rural goods fell \$97m (4%) and other goods fell \$20m (2%). Services credits rose \$42m (1%).

Exports of goods

GOODS CREDITS



(a) Trend breaks of \$819m to April 2005, \$500m to April 2006 and \$1,685m to April 2008 have been applied.

RURAL GOODS

In trend terms, exports of rural goods rose \$21m (1%) to \$2,375m.

In seasonally adjusted terms, exports of rural goods fell \$97m (4%) to \$2,302m.

The components contributing to the fall in the seasonally adjusted estimates were:

- meat and meat preparations, down \$51m (8%)
- wool and sheepskins, down \$29m (14%)
- cereal grains and cereal preparations, down \$21m (3%).

In original terms, exports of rural goods fell \$431m (16%) to \$2,205m.

ANALYSIS AND COMMENTS *continued*

Exports of goods *continued*

NON-RURAL GOODS

In trend terms, exports of non-rural goods rose \$366m (3%) to \$14,696m.

In seasonally adjusted terms, exports of non-rural goods rose \$529m (4%) to \$15,107m.

The main components contributing to the rise in the seasonally adjusted estimates were:

- coal, coke and briquettes, up \$657m (21%)
- other mineral fuels, up \$101m (5%).

Partly offsetting these were:

- other non-rural, down \$110m (10%)
- transport equipment, down \$41m (8%)
- machinery, down \$39m (5%)
- metal ores and minerals, down \$37m (1%).

In original terms, exports of non-rural goods rose \$390m (3%) to \$15,262m.

OTHER GOODS

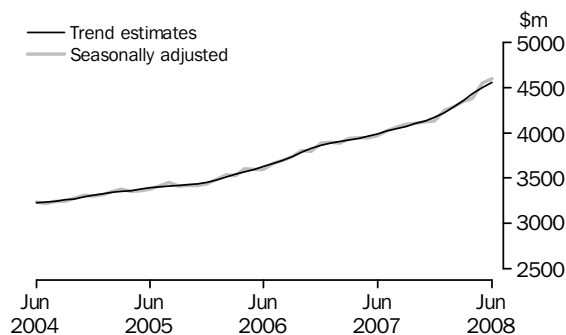
In trend terms, exports of other goods fell \$41m (3%) to \$1,146m.

In seasonally adjusted terms, exports of other goods fell \$20m (2%) to \$1,047m with non-monetary gold down \$19m (2%).

In original terms, exports of other goods fell \$17m (2%) to \$1,053m.

Exports of Services

SERVICES CREDITS



In trend terms, services credits rose \$59m (1%) to \$4,555m.

In seasonally adjusted terms, services credits rose \$42m (1%) to \$4,592m.

All components contributed to the rise in the seasonally adjusted estimates with:

- travel services, up \$30m (1%)
- transportation services, up \$12m (1%)
- other services, up \$1m.

In seasonally adjusted terms, tourism related services credits rose \$22m (1%) to \$2,948m.

IMPORTS OF GOODS AND SERVICES

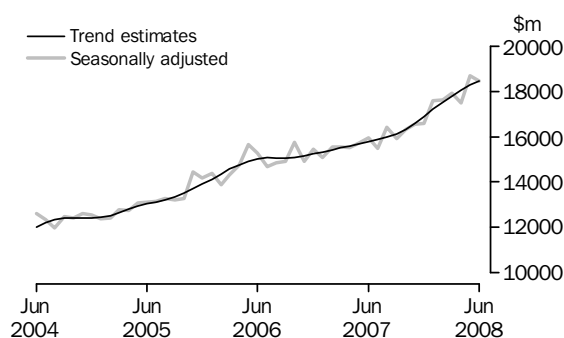
The trend estimate of goods and services debits rose \$206m (1%) between May and June to \$22,614m.

In seasonally adjusted terms, goods and services debits fell \$210m (1%) to \$22,638m. Intermediate and other merchandise goods fell \$398m (5%), consumption goods fell \$102m (2%) and other goods fell \$74m (8%) while capital goods rose \$341m (9%). Services debits rose \$23m (1%).

Preliminary analysis shows that goods imports volumes, in seasonally adjusted terms, rose about 2.0% during the June quarter 2008 and the implicit price deflator rose 1%. In original terms, the Chain Laspeyres price index rose about 1.8% and the implicit price deflator rose about 0.6%. The final volume and price outcomes will be published in the June quarter 2008 issue of Balance of Payments and International Investment Position, Australia (cat. no. 5302.0).

Imports of goods

GOODS DEBITS



CONSUMPTION GOODS

In trend terms, imports of consumption goods rose \$12m to \$5,186m.

In seasonally adjusted terms, imports of consumption goods fell \$102m (2%) to \$5,183m.

The main component contributing to the fall in the seasonally adjusted estimates was non-industrial transport equipment, down \$185m (12%).

Partly offsetting this fall was the household electrical items component, up \$150m (35%).

In original terms, imports of consumption goods fell \$252m (5%) to \$4,791m.

CAPITAL GOODS

In trend terms, imports of capital goods rose \$17m to \$3,995m.

In seasonally adjusted terms, imports of capital goods rose \$341m (9%) to \$4,158m.

The main components contributing to the rise in the seasonally adjusted estimates were:

- civil aircraft, up \$291m (139%)
- industrial transport equipment nes, up \$131m (21%).

Partly offset these rises were:

- machinery and industrial equipment, down \$41m (3%)
- ADP equipment, down \$38 (7%).

In original terms, imports of capital goods rose \$497m (13%) to \$4,304m.

ANALYSIS AND COMMENTS *continued*

Imports of goods continued

INTERMEDIATE AND OTHER MERCHANDISE GOODS

In trend terms, imports of intermediate and other merchandise goods rose \$130m (2%) to \$8,351m.

In seasonally adjusted terms, imports of intermediate and other merchandise goods fell \$398m (5%) to \$8,252m.

The main component contributing to the fall in the seasonally adjusted estimates was fuels and lubricants, down \$341m (11%). In original terms, crude petroleum oils increased \$265m (20%) with volumes up 13% while refined petroleum oils decreased \$513m (29%), with volumes down 36%. Within refined petroleum oils:

- diesel decreased \$172m
- gasoline decreased \$170m
- fuel oil decreased \$124m.

In original terms, imports of intermediate and other merchandise goods fell \$746m (9%) to \$7,991m.

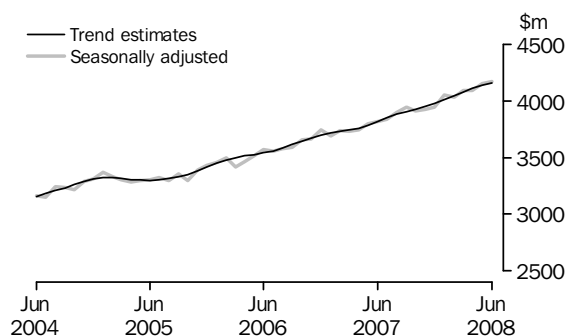
OTHER GOODS

In trend terms, imports of other goods rose \$25m (3%) to \$922m.

In both original terms and seasonally adjusted terms, other goods debits fell \$74m (8%) to \$874m. The main component contributing to the fall was goods for processing, down \$128m (91%) which was partially offset by non-monetary gold, up \$58m (9%).

Imports of services

SERVICES DEBITS



In trend terms, services debits rose \$22m (1%) to \$4,160m.

In seasonally adjusted terms, services debits rose \$23m (1%) to \$4,171m.

All components contributed to the rise in the seasonally adjusted estimates with:

- transportation services, up \$11m (1%)
- travel services, up \$8m (1%)
- other services, up \$4m.

In seasonally adjusted terms, tourism related services debits rose \$44m (2%) to \$2,195m.

GOODS AND SERVICES (a), Summary: Seasonally Adjusted and Trend Estimates

Months	BALANCE	CREDITS					DEBITS					
	On goods and services	Total goods and services	Total goods	Rural goods (b)	Non-rural and other goods (b)	Total services	Total goods and services	Total goods	Con-sumption goods	Capital goods	Inter-mediate and other goods	Total services
	\$m	\$m	\$m	\$m	\$m	\$m	\$m	\$m	\$m	\$m	\$m	\$m
SEASONALLY ADJUSTED												
2007												
April	-1 128	18 139	14 196	1 945	12 250	3 943	-19 267	-15 526	-4 766	-3 342	-7 418	-3 741
May	-1 217	18 289	14 342	1 933	12 409	3 947	-19 506	-15 710	-4 549	-3 744	-7 416	-3 797
June	-1 931	17 838	13 866	1 888	11 978	3 973	-19 769	-15 950	-4 598	-3 587	-7 765	-3 819
July	-1 173	18 134	14 109	1 942	12 167	4 025	-19 307	-15 471	-4 610	-3 278	-7 583	-3 835
August	-1 711	18 618	14 555	1 887	12 669	4 063	-20 329	-16 432	-4 737	-3 699	-7 996	-3 898
September	-2 040	17 833	13 735	1 997	11 738	4 098	-19 873	-15 930	-4 780	-3 684	-7 466	-3 943
October	-2 736	17 482	13 381	1 887	11 494	4 101	-20 218	-16 305	-4 753	-3 480	-8 072	-3 913
November	-2 040	18 443	14 325	1 960	12 365	4 117	-20 483	-16 557	-4 918	-3 685	-7 954	-3 926
December	-1 630	18 887	14 754	2 144	12 610	4 133	-20 517	-16 571	-4 993	-3 826	-7 752	-3 945
2008												
January	-2 208	19 427	15 183	2 145	13 038	4 244	-21 635	-17 587	-5 171	-3 734	-8 682	-4 048
February	-3 011	18 647	14 360	2 142	12 217	4 287	-21 658	-17 628	-5 079	-3 980	-8 570	-4 030
March	-2 394	19 605	15 256	2 265	12 991	4 349	-21 999	-17 907	-5 236	-4 185	-8 485	-4 092
April	607	22 169	17 790	2 390	15 400	4 379	-21 561	-17 471	-4 954	-3 754	-8 763	-4 090
May	-253	22 595	18 044	2 399	15 645	4 550	-22 848	-18 700	-5 285	-3 817	-9 598	-4 148
June	411	23 049	18 457	2 302	16 154	4 592	-22 638	-18 467	-5 183	-4 158	-9 126	-4 171
TREND ESTIMATES												
2007												
April	-1 221	18 107	14 167	1 960	12 206	3 941	-19 329	-15 570	-4 650	-3 504	-7 416	-3 759
May	-1 345	18 124	14 162	1 937	12 225	3 963	-19 469	-15 683	-4 635	-3 516	-7 532	-3 786
June	-1 495	18 105	14 115	1 918	12 196	3 990	-19 600	-15 781	-4 629	-3 529	-7 622	-3 819
July	-1 672	18 058	14 038	1 907	12 131	4 020	-19 730	-15 877	-4 643	-3 547	-7 688	-3 853
August	-1 824	18 037	13 989	1 911	12 078	4 048	-19 860	-15 979	-4 684	-3 562	-7 733	-3 881
September	-1 960	18 065	13 991	1 931	12 060	4 074	-20 025	-16 121	-4 749	-3 583	-7 789	-3 905
October	-2 101	18 156	14 054	1 962	12 092	4 102	-20 257	-16 330	-4 833	-3 625	-7 872	-3 926
November	-2 211	18 332	14 200	2 006	12 194	4 132	-20 543	-16 594	-4 922	-3 696	-7 976	-3 949
December	-2 278	18 593	14 424	2 066	12 358	4 169	-20 870	-16 895	-5 001	-3 776	-8 118	-3 976
2008												
January	-2 273	18 943	14 723	2 135	12 588	4 219	-21 216	-17 209	-5 064	-3 841	-8 304	-4 007
February	-2 206	19 354	15 070	2 205	12 865	4 284	-21 559	-17 517	-5 109	-3 894	-8 514	-4 042
March	-2 115	19 761	15 405	2 267	13 138	4 356	-21 876	-17 798	-5 138	-3 934	-8 727	-4 078
April(c)	-253	21 905	17 476	2 316	15 160	4 428	-22 158	-18 048	-5 158	-3 959	-8 931	-4 110
May	-42	22 367	17 871	2 354	15 517	4 496	-22 408	-18 271	-5 174	-3 978	-9 118	-4 138
June	158	22 773	18 218	2 375	15 842	4 555	-22 614	-18 454	-5 186	-3 995	-9 273	-4 160

(a) For sign conventions, see paragraph 11 of the Explanatory Notes.

(b) For all time periods, estimates for sugar, sugar preparations and honey are included in Non-rural and other goods.

(c) A trend break of \$1,685m has been applied to Non-rural and other goods credits and related aggregates in April 2008.

GOODS AND SERVICES(a), Summary: Original

	BALANCE	CREDITS					DEBITS					
	<i>On goods and services</i>	<i>Total goods and services</i>	<i>Total goods</i>	<i>Rural goods(b)</i>	<i>Non-rural and other goods(b)</i>	<i>Total services</i>	<i>Total goods and services</i>	<i>Total goods</i>	<i>Con-sumption goods</i>	<i>Capital goods</i>	<i>Inter-mediate and other goods</i>	<i>Total services</i>
	\$m	\$m	\$m	\$m	\$m	\$m	\$m	\$m	\$m	\$m	\$m	\$m
FINANCIAL YEAR												
2005-06	-14 520	196 274	154 425	25 312	129 113	41 849	-210 794	-169 716	-50 322	-39 996	-79 398	-41 078
2006-07	-12 161	215 647	169 535	25 135	144 400	46 112	-227 808	-183 527	-54 998	-41 199	-87 330	-44 281
2007-08	-17 908	235 110	184 148	25 559	158 589	50 962	-253 018	-204 935	-59 574	-45 280	-100 081	-48 083
MONTHS												
2007												
April	-504	17 972	13 976	1 928	12 048	3 996	-18 476	-14 827	-4 329	-3 232	-7 266	-3 649
May	-856	18 614	14 830	2 084	12 746	3 784	-19 470	-15 854	-4 415	-3 831	-7 608	-3 616
June	-1 924	17 664	13 988	1 916	12 072	3 676	-19 588	-15 709	-4 344	-3 755	-7 610	-3 879
July	-927	18 507	14 420	1 897	12 523	4 087	-19 434	-15 480	-4 643	-3 262	-7 575	-3 954
August	-2 026	18 959	14 806	1 866	12 940	4 153	-20 985	-17 107	-5 065	-3 787	-8 255	-3 878
September	-2 252	17 793	13 828	2 009	11 819	3 965	-20 045	-15 822	-4 952	-3 587	-7 283	-4 223
October	-3 793	18 037	13 810	1 949	11 861	4 227	-21 830	-17 732	-5 560	-3 701	-8 471	-4 098
November	-3 126	18 373	14 186	1 964	12 222	4 187	-21 499	-17 687	-5 505	-4 069	-8 113	-3 812
December	-212	19 816	15 696	2 256	13 440	4 120	-20 028	-15 886	-4 751	-3 783	-7 352	-4 142
2008												
January	-3 661	17 681	13 511	1 831	11 680	4 170	-21 342	-17 093	-4 856	-3 515	-8 722	-4 249
February	-2 359	18 190	13 707	2 142	11 565	4 483	-20 549	-16 908	-4 825	-3 629	-8 454	-3 641
March	-828	20 073	15 535	2 378	13 157	4 538	-20 901	-17 007	-4 609	-4 107	-8 291	-3 894
April	251	21 961	17 551	2 426	15 125	4 410	-21 710	-17 718	-4 974	-3 729	-9 015	-3 992
May	446	22 952	18 578	2 636	15 942	4 374	-22 506	-18 535	-5 043	-3 807	-9 685	-3 971
June	579	22 768	18 520	2 205	16 315	4 248	-22 189	-17 960	-4 791	-4 304	-8 865	-4 229
FINANCIAL YEAR TO DATE												
12 months ended June												
2007	-12 161	215 647	169 535	25 135	144 400	46 112	-227 808	-183 527	-54 998	-41 199	-87 330	-44 281
2008	-17 908	235 110	184 148	25 559	158 589	50 962	-253 018	-204 935	-59 574	-45 280	-100 081	-48 083

(a) For sign conventions, see paragraph 11 of the Explanatory Notes.

(b) For all time periods, estimates for sugar, sugar preparations and honey are included in Non-rural and other goods.

							12 MONTHS ENDED JUNE		Change %
	2005-06	2006-07	2007-08	Apr 2008	May 2008	Jun 2008	2007	2008	
	\$m	\$m	\$m	\$m	\$m	\$m	\$m	\$m	
Total goods credits	154 425	169 535	184 148	17 551	18 578	18 520	169 535	184 148	8.6
<i>Rural goods</i>	25 312	25 135	25 559	2 426	2 636	2 205	25 135	25 559	1.7
Meat and meat preparations	6 709	7 078	6 548	585	651	559	7 078	6 548	-7.5
Cereal grains and cereal preparations	4 852	4 171	4 998	594	748	510	4 171	4 998	19.8
Wool and sheepskins	2 544	3 065	2 803	233	246	181	3 065	2 803	-8.5
Other rural(a)	11 207	10 821	11 210	1 014	991	955	10 821	11 210	3.6
<i>Non-rural goods</i>	118 164	131 775	144 398	13 682	14 872	15 262	131 775	144 398	9.6
Metal ores and minerals	28 936	35 314	42 171	4 246	4 579	4 748	35 314	42 171	19.4
Coal, coke and briquettes	24 353	21 928	25 117	2 816	3 245	3 788	21 928	25 117	14.5
Other mineral fuels	13 220	15 642	18 718	1 637	1 737	1 845	15 642	18 718	19.7
Metals (excl. non-monetary gold)	11 278	14 825	14 020	1 101	1 290	1 301	14 825	14 020	-5.4
Machinery	8 087	8 437	8 807	749	759	690	8 437	8 807	4.4
Transport equipment	5 316	4 646	5 739	466	641	489	4 646	5 739	23.5
Other manufactures	14 926	16 193	16 937	1 519	1 487	1 411	16 193	16 937	4.6
Other non-rural (incl. sugar and beverages)	12 048	14 790	12 889	1 148	1 134	990	14 790	12 889	-12.9
<i>Other goods</i>	10 949	12 625	14 191	1 443	1 070	1 053	12 625	14 191	12.4
Goods for processing	368	417	276	31	22	23	417	276	-33.8
Repairs on goods	74	90	103	11	10	10	90	103	14.4
Goods procured in ports by carriers	1 420	1 379	1 547	137	142	143	1 379	1 547	12.2
Non-monetary gold	9 087	10 739	12 265	1 264	896	877	10 739	12 265	14.2

(a) For all time periods, estimates for sugar, sugar preparations and honey are included in Other non-rural.

GOODS DEBITS(a): Original

							12 MONTHS ENDED JUNE		Change
	2005-06	2006-07	2007-08	Apr	May	Jun	2007	2008	
	\$m	\$m	\$m	\$m	\$m	\$m	\$m	\$m	
Total goods debits	-169 716	-183 527	-204 935	-17 718	-18 535	-17 960	-183 527	-204 935	11.7
<i>Consumption goods</i>	-50 322	-54 998	-59 574	-4 974	-5 043	-4 791	-54 998	-59 574	8.3
Food and beverages, mainly for consumption	-6 170	-7 181	-7 841	-642	-650	-602	-7 181	-7 841	9.2
Household electrical items	-4 291	-4 610	-5 239	-400	-386	-497	-4 610	-5 239	13.6
Non-industrial transport equipment	-13 589	-14 889	-16 867	-1 494	-1 583	-1 396	-14 889	-16 867	13.3
Textiles, clothing and footwear	-6 365	-6 805	-7 050	-586	-514	-501	-6 805	-7 050	3.6
Toys, books and leisure goods	-4 055	-4 330	-4 574	-339	-432	-375	-4 330	-4 574	5.6
Consumption goods n.e.s.	-15 852	-17 183	-18 003	-1 513	-1 478	-1 420	-17 183	-18 003	4.8
<i>Capital goods</i>	-39 996	-41 199	-45 280	-3 729	-3 807	-4 304	-41 199	-45 280	9.9
Machinery and industrial equipment	-14 328	-15 306	-16 447	-1 356	-1 397	-1 368	-15 306	-16 447	7.5
ADP equipment	-6 073	-6 847	-6 717	-590	-560	-580	-6 847	-6 717	-1.9
Telecommunications equipment	-5 334	-5 333	-5 817	-448	-468	-485	-5 333	-5 817	9.1
Civil aircraft	-2 967	-1 667	-2 691	-153	-209	-500	-1 667	-2 691	61.4
Industrial transport equipment n.e.s.	-5 495	-6 458	-7 666	-661	-666	-859	-6 458	-7 666	18.7
Capital goods n.e.s.	-5 799	-5 588	-5 942	-521	-507	-512	-5 588	-5 942	6.3
<i>Intermediate and other merchandise goods</i>	-72 722	-79 908	-90 465	-8 133	-8 737	-7 991	-79 908	-90 465	13.2
Food and beverages, mainly for industry	-651	-819	-923	-80	-93	-69	-819	-923	12.7
Primary industrial supplies n.e.s.	-1 193	-1 555	-1 481	-111	-143	-124	-1 555	-1 481	-4.8
Fuels and lubricants	-21 014	-21 470	-29 569	-2 754	-3 187	-2 846	-21 470	-29 569	37.7
Parts for transport equipment	-7 314	-8 355	-8 836	-764	-789	-736	-8 355	-8 836	5.8
Parts for ADP equipment	-1 857	-1 620	-1 115	-88	-95	-95	-1 620	-1 115	-31.2
Other parts for capital goods	-10 154	-11 762	-11 958	-1 067	-1 099	-971	-11 762	-11 958	1.7
Organic and inorganic chemicals	-4 134	-4 406	-4 674	-409	-412	-419	-4 406	-4 674	6.1
Paper and paperboard	-2 302	-2 372	-2 361	-188	-199	-187	-2 372	-2 361	-0.5
Textile yarn and fabrics	-1 361	-1 365	-1 335	-113	-109	-104	-1 365	-1 335	-2.2
Iron and steel	-3 239	-3 817	-3 722	-329	-349	-370	-3 817	-3 722	-2.5
Plastics	-2 517	-2 957	-3 063	-257	-266	-249	-2 957	-3 063	3.6
Processed industrial supplies n.e.s.	-15 856	-17 791	-20 013	-1 880	-1 895	-1 707	-17 791	-20 013	12.5
Other merchandise goods	-1 130	-1 619	-1 415	-93	-101	-114	-1 619	-1 415	-12.6
<i>Other goods</i>	-6 676	-7 422	-9 616	-882	-948	-874	-7 422	-9 616	29.6
Goods for processing	-445	-507	-244	-4	-141	-13	-507	-244	-51.9
Repairs on goods	-115	-131	-117	-10	-13	-9	-131	-117	-10.7
Goods procured in ports by carriers	-1 406	-1 468	-1 629	-139	-139	-139	-1 468	-1 629	11.0
Non-monetary gold	-4 710	-5 316	-7 626	-729	-655	-713	-5 316	-7 626	43.5

(a) For sign conventions, see paragraph 11 of the Explanatory Notes.

GOODS CREDITS: Seasonally Adjusted

	Sep 2007	Oct 2007	Nov 2007	Dec 2007	Jan 2008	Feb 2008	Mar 2008	Apr 2008	May 2008	Jun 2008
	\$m	\$m	\$m	\$m	\$m	\$m	\$m	\$m	\$m	\$m
Total goods credits	13 735	13 381	14 325	14 754	15 183	14 360	15 256	17 790	18 044	18 457
<i>Rural goods</i>	1 997	1 887	1 960	2 144	2 145	2 142	2 265	2 390	2 399	2 302
Meat and meat preparations	544	504	560	578	524	485	530	579	613	562
Cereal grains and cereal preparations	328	250	222	340	394	459	514	568	630	609
Wool and sheepskins	229	240	261	275	260	238	228	219	214	185
Other rural(a)	896	893	917	951	968	960	993	1 023	942	945
<i>Non-rural goods</i>	10 798	10 396	11 118	11 543	11 671	10 870	11 846	13 954	14 578	15 107
Metal ores and minerals	3 213	2 598	3 192	3 226	3 649	2 904	3 501	4 377	4 566	4 529
Coal, coke and briquettes(b)	1 779	1 602	1 643	1 834	1 745	1 481	1 822	2 857	3 186	3 843
Other mineral fuels	1 031	1 596	1 493	1 486	1 625	1 698	1 719	1 691	1 871	1 972
Metals (excl. non-monetary gold)	1 211	982	1 145	1 322	897	1 155	1 179	1 137	1 190	1 198
Machinery	769	735	730	732	754	758	705	758	731	692
Transport equipment	455	457	466	470	512	519	447	475	539	498
Other manufactures	1 415	1 389	1 369	1 381	1 468	1 292	1 382	1 531	1 429	1 419
Other non-rural (incl. sugar and beverages)	925	1 037	1 081	1 091	1 021	1 063	1 090	1 127	1 066	956
<i>Other goods</i>	941	1 098	1 248	1 067	1 367	1 347	1 145	1 446	1 067	1 047
Goods for processing(c)	13	19	25	30	25	28	18	31	22	23
Repairs on goods(c)	9	8	8	7	6	11	7	11	10	10
Goods procured in ports by carriers	109	112	132	145	135	133	137	140	139	137
Non-monetary gold(c)	810	959	1 083	885	1 201	1 175	983	1 264	896	877

(a) For all time periods, estimates for sugar, sugar preparations and honey are included in Other non-rural.

(b) Only a length-of-month effect has been applied to this component.

(c) This component is not seasonally adjusted.

GOODS DEBITS(a): Seasonally Adjusted

	Sep 2007	Oct 2007	Nov 2007	Dec 2007	Jan 2008	Feb 2008	Mar 2008	Apr 2008	May 2008	Jun 2008
	\$m	\$m	\$m	\$m	\$m	\$m	\$m	\$m	\$m	\$m
Total goods debits	-15 930	-16 305	-16 557	-16 571	-17 587	-17 628	-17 907	-17 471	-18 700	-18 467
<i>Consumption goods</i>	-4 780	-4 753	-4 918	-4 993	-5 171	-5 079	-5 236	-4 954	-5 285	-5 183
Food and beverages, mainly for consumption	-649	-590	-633	-624	-662	-678	-661	-676	-698	-690
Household electrical items	-439	-424	-429	-418	-436	-441	-406	-424	-432	-582
Non-industrial transport equipment	-1 300	-1 351	-1 421	-1 447	-1 555	-1 450	-1 605	-1 420	-1 531	-1 346
Textiles, clothing and footwear	-582	-573	-579	-596	-588	-598	-580	-587	-622	-611
Toys, books and leisure goods	-370	-355	-378	-397	-420	-379	-385	-384	-428	-397
Consumption goods n.e.s.	-1 440	-1 459	-1 477	-1 512	-1 510	-1 533	-1 600	-1 463	-1 574	-1 557
<i>Capital goods</i>	-3 684	-3 480	-3 685	-3 826	-3 734	-3 980	-4 185	-3 754	-3 817	-4 158
Machinery and industrial equipment	-1 464	-1 175	-1 341	-1 302	-1 429	-1 349	-1 570	-1 408	-1 476	-1 435
ADP equipment	-571	-536	-585	-634	-598	-556	-537	-559	-527	-489
Telecommunications equipment	-487	-592	-534	-458	-470	-477	-472	-450	-463	-451
Civil aircraft(b)	-71	-115	-64	-307	-72	-430	-464	-153	-209	-500
Industrial transport equipment n.e.s.	-600	-582	-667	-620	-673	-643	-631	-672	-631	-762
Capital goods n.e.s.	-490	-481	-495	-505	-492	-524	-511	-511	-511	-520
<i>Intermediate and other merchandise goods</i>	-6 904	-7 286	-7 164	-7 264	-7 767	-7 690	-7 722	-7 881	-8 650	-8 252
Food and beverages, mainly for industry	-68	-92	-71	-78	-80	-84	-66	-77	-90	-76
Primary industrial supplies n.e.s.(c)	-112	-152	-108	-124	-134	-112	-104	-108	-139	-129
Fuels and lubricants(b)	-2 027	-2 301	-2 246	-2 345	-2 633	-2 549	-2 702	-2 754	-3 187	-2 846
Parts for transport equipment	-703	-691	-732	-719	-745	-770	-721	-766	-776	-761
Parts for ADP equipment	-99	-91	-92	-95	-93	-88	-88	-89	-89	-88
Other parts for capital goods	-981	-988	-962	-984	-947	-1 047	-954	-1 035	-1 076	-1 015
Organic and inorganic chemicals(c)	-436	-379	-368	-326	-411	-379	-351	-381	-388	-466
Paper and paperboard	-194	-195	-184	-190	-178	-196	-206	-189	-205	-203
Textile yarn and fabrics	-117	-112	-113	-117	-114	-112	-114	-109	-108	-104
Iron and steel	-294	-284	-303	-272	-305	-264	-308	-336	-343	-376
Plastics	-260	-255	-257	-251	-245	-245	-248	-261	-266	-274
Processed industrial supplies n.e.s.	-1 517	-1 618	-1 616	-1 658	-1 743	-1 636	-1 744	-1 683	-1 882	-1 801
Other merchandise goods(b)	-96	-125	-111	-106	-138	-210	-115	-93	-101	-114
<i>Other goods</i>	-562	-786	-790	-488	-915	-880	-763	-882	-948	-874
Goods for processing(b)	-1	-1	-14	-1	-11	-49	-1	-4	-141	-13
Repairs on goods(b)	-9	-10	-9	-8	-5	-5	-8	-10	-13	-9
Goods procured in ports by carriers(b)	-119	-138	-138	-137	-147	-147	-148	-139	-139	-139
Non-monetary gold(d)	-433	-637	-629	-342	-752	-679	-606	-729	-655	-713

(a) For sign conventions, see paragraph 11 of the Explanatory Notes.

(b) These components are not seasonally adjusted.

(c) In using these seasonally adjusted series, care should be exercised because of the difficulties associated with reliably estimating the seasonal pattern.

(d) From October 1995, this component is not seasonally adjusted.

GOODS CREDITS: Trend Estimates

	Sep 2007	Oct 2007	Nov 2007	Dec 2007	Jan 2008	Feb 2008	Mar 2008	Apr 2008	May 2008	Jun 2008
	\$m	\$m	\$m	\$m	\$m	\$m	\$m	\$m	\$m	\$m
Total goods credits	13 991	14 054	14 200	14 424	14 723	15 070	15 405	17 476	17 871	18 218
<i>Rural goods</i>	1 931	1 962	2 006	2 066	2 135	2 205	2 267	2 316	2 354	2 375
Meat and meat preparations	534	539	538	535	534	537	546	557	569	580
Cereal grains and cereal preparations	271	274	292	329	385	449	510	561	603	631
Wool and sheepskins	239	245	252	256	254	245	232	219	207	197
Other rural(a)	887	904	924	945	962	974	979	979	975	967
<i>Non-rural goods</i>	10 929	10 965	11 040	11 152	11 333	11 589	11 876	13 930	14 330	14 696
Metal ores and minerals(b)	3 053	3 070	3 109	3 170	3 259	3 367	3 474	4 310	4 419	4 522
Coal, coke and briquettes(c)	1 681	1 689	1 687	1 673	1 678	1 728	1 825	2 964	3 182	3 389
Other mineral fuels	1 351	1 413	1 481	1 543	1 603	1 662	1 718	1 780	1 844	1 899
Metals (excl. non-monetary gold)	1 156	1 138	1 124	1 114	1 114	1 126	1 140	1 156	1 170	1 183
Machinery	736	739	741	742	742	741	737	732	725	717
Transport equipment	455	465	473	480	485	490	493	496	500	503
Other manufactures	1 409	1 403	1 390	1 384	1 387	1 399	1 413	1 426	1 438	1 445
Other non-rural (incl. sugar and beverages)	1 086	1 048	1 035	1 045	1 065	1 077	1 075	1 066	1 053	1 038
<i>Other goods</i>	1 132	1 126	1 154	1 206	1 255	1 276	1 263	1 230	1 187	1 146
Goods for processing	21	20	22	24	26	26	25	25	24	23
Repairs on goods	8	8	8	8	8	8	9	10	10	10
Goods procured in ports by carriers	116	121	127	132	136	138	138	138	138	138
Non-monetary gold	987	977	998	1 042	1 085	1 104	1 091	1 058	1 015	975

- (a) For all time periods, estimates for sugar, sugar preparations and honey are included in Other non-rural.
- (b) A trend break of \$725m has been applied to metal ores and minerals, and related aggregates in April 2008.
- (c) A trend break of \$960m has been applied to coal, coke and briquettes and related aggregates in April 2008.

GOODS DEBITS(a): Trend Estimates

	Sep 2007	Oct 2007	Nov 2007	Dec 2007	Jan 2008	Feb 2008	Mar 2008	Apr 2008	May 2008	Jun 2008
	\$m	\$m	\$m	\$m	\$m	\$m	\$m	\$m	\$m	\$m
Total goods debits	-16 121	-16 330	-16 594	-16 895	-17 209	-17 517	-17 798	-18 048	-18 271	-18 454
<i>Consumption goods</i>	-4 749	-4 833	-4 922	-5 001	-5 064	-5 109	-5 138	-5 158	-5 174	-5 186
Food and beverages, mainly for consumption	-628	-632	-634	-639	-648	-661	-673	-681	-688	-693
Household electrical items	-426	-429	-429	-426	-422	-424	-433	-448	-468	-491
Non-industrial transport equipment	-1 299	-1 359	-1 417	-1 464	-1 496	-1 508	-1 504	-1 488	-1 466	-1 440
Textiles, clothing and footwear	-576	-580	-583	-586	-588	-591	-594	-599	-604	-608
Toys, books and leisure goods	-362	-371	-380	-388	-392	-395	-396	-398	-400	-402
Consumption goods n.e.s.	-1 457	-1 463	-1 479	-1 499	-1 518	-1 530	-1 538	-1 544	-1 549	-1 552
<i>Capital goods</i>	-3 583	-3 625	-3 696	-3 776	-3 841	-3 894	-3 934	-3 959	-3 978	-3 995
Machinery and industrial equipment	-1 298	-1 308	-1 323	-1 348	-1 381	-1 415	-1 443	-1 460	-1 466	-1 471
ADP equipment	-573	-581	-587	-589	-584	-573	-557	-539	-522	-507
Telecommunications equipment	-506	-513	-512	-502	-487	-472	-463	-459	-456	-456
Civil aircraft	-131	-123	-151	-197	-241	-278	-305	-323	-340	-350
Industrial transport equipment n.e.s.	-597	-614	-630	-639	-643	-648	-655	-665	-678	-695
Capital goods n.e.s.	-478	-486	-494	-500	-505	-509	-512	-514	-515	-517
<i>Intermediate and other merchandise goods</i>	-7 031	-7 142	-7 257	-7 386	-7 535	-7 704	-7 881	-8 057	-8 221	-8 351
Food and beverages, mainly for industry	-75	-77	-78	-79	-78	-78	-78	-79	-80	-80
Primary industrial supplies n.e.s.	-124	-126	-125	-122	-119	-117	-117	-119	-122	-124
Fuels and lubricants	-2 119	-2 203	-2 296	-2 400	-2 507	-2 618	-2 728	-2 830	-2 918	-2 982
Parts for transport equipment	-713	-718	-722	-729	-737	-746	-753	-759	-763	-768
Parts for ADP equipment	-97	-95	-93	-92	-91	-90	-89	-89	-88	-87
Other parts for capital goods	-977	-975	-974	-976	-983	-995	-1 008	-1 022	-1 033	-1 041
Organic and inorganic chemicals	-390	-389	-382	-372	-366	-369	-379	-391	-404	-419
Paper and paperboard	-197	-193	-189	-188	-189	-192	-195	-199	-201	-203
Textile yarn and fabrics	-112	-113	-115	-115	-114	-113	-111	-110	-108	-106
Iron and steel	-299	-292	-286	-284	-287	-296	-310	-326	-342	-359
Plastics	-256	-255	-253	-250	-248	-249	-253	-258	-263	-268
Processed industrial supplies n.e.s.	-1 565	-1 593	-1 623	-1 651	-1 677	-1 702	-1 728	-1 756	-1 785	-1 809
Other merchandise goods	-108	-113	-120	-131	-138	-137	-131	-122	-113	-105
<i>Other goods</i>	-758	-731	-719	-732	-769	-811	-845	-874	-897	-922
Goods for processing	-3	-5	-6	-9	-14	-22	-32	-41	-49	-56
Repairs on goods	-12	-10	-9	-7	-7	-7	-8	-9	-10	-11
Goods procured in ports by carriers	-126	-131	-137	-141	-144	-145	-144	-143	-141	-140
Non-monetary gold	-618	-584	-567	-574	-604	-637	-662	-681	-697	-715

(a) For sign conventions, see paragraph 11 of the Explanatory Notes.

SERVICES (a)(b), Summary: Original

							12 MONTHS ENDED JUNE		Change
	2005-06	2006-07	2007-08	Apr 2008	May 2008	Jun 2008	2007	2008	
	\$m	\$m	\$m	\$m	\$m	\$m	\$m	\$m	
Services credits	41 849	46 112	50 962	4 410	4 374	4 248	46 112	50 962	10.5
<i>Transportation services</i>	8 208	8 617	9 332	800	789	800	8 617	9 332	8.3
Freight	608	609	623	52	52	53	609	623	2.3
Passenger and other	7 600	8 008	8 709	748	737	747	8 008	8 709	8.8
<i>Travel services</i>	22 624	25 122	28 403	2 455	2 430	2 297	25 122	28 403	13.1
<i>Other services</i>	11 017	12 373	13 227	1 155	1 155	1 151	12 373	13 227	6.9
Services debits	-41 078	-44 281	-48 083	-3 992	-3 971	-4 229	-44 281	-48 083	8.6
<i>Transportation services</i>	-14 508	-15 368	-16 231	-1 349	-1 378	-1 388	-15 368	-16 231	5.6
Freight	-7 776	-8 044	-8 610	-746	-729	-679	-8 044	-8 610	7.0
Passenger and other	-6 732	-7 324	-7 621	-603	-649	-709	-7 324	-7 621	4.1
<i>Travel services</i>	-15 090	-15 934	-17 837	-1 444	-1 395	-1 597	-15 934	-17 837	11.9
<i>Other services</i>	-11 480	-12 979	-14 015	-1 199	-1 198	-1 244	-12 979	-14 015	8.0
Memorandum items:									
Tourism related service credits(c)	26 728	29 359	32 468	2 745	2 709	2 583	29 359	32 468	10.6
Tourism related service debits(c)	-21 374	-22 810	-24 979	-2 005	-2 002	-2 266	-22 810	-24 979	9.5

(a) For sign conventions, see paragraph 11 of the Explanatory Notes.
 (b) For more detailed trade in services components, see table 11.

(c) For a more detailed explanation of tourism related services, see paragraphs 18 and 19 of the Explanatory Notes.

	Sep 2007	Oct 2007	Nov 2007	Dec 2007	Jan 2008	Feb 2008	Mar 2008	Apr 2008	May 2008	Jun 2008
	\$m	\$m	\$m	\$m	\$m	\$m	\$m	\$m	\$m	\$m
SEASONALLY ADJUSTED										
Services credits	4 098	4 101	4 117	4 133	4 244	4 287	4 349	4 379	4 550	4 592
<i>Transportation services</i>	741	723	707	720	819	808	820	832	849	861
Freight	51	54	54	53	51	51	50	52	52	52
Passenger and other	690	669	653	667	768	757	770	780	798	809
<i>Travel services</i>	2 272	2 290	2 318	2 314	2 330	2 380	2 429	2 415	2 561	2 591
<i>Other services(b)</i>	1 085	1 088	1 092	1 098	1 095	1 100	1 099	1 132	1 140	1 141
Services debits	-3 943	-3 913	-3 926	-3 945	-4 048	-4 030	-4 092	-4 090	-4 148	-4 171
<i>Transportation services</i>	-1 323	-1 327	-1 317	-1 341	-1 400	-1 368	-1 392	-1 382	-1 397	-1 408
Freight	-695	-703	-690	-709	-765	-726	-740	-737	-753	-741
Passenger and other	-627	-624	-627	-632	-636	-642	-652	-645	-643	-667
<i>Travel services</i>	-1 449	-1 478	-1 483	-1 486	-1 482	-1 484	-1 508	-1 498	-1 531	-1 539
<i>Other services(b)</i>	-1 171	-1 108	-1 125	-1 119	-1 166	-1 177	-1 193	-1 211	-1 220	-1 224
Memorandum items:										
Tourism related service credits(c)	2 625	2 622	2 650	2 641	2 659	2 709	2 772	2 733	2 926	2 948
Tourism related service debits(c)	-2 036	-2 041	-2 077	-2 085	-2 079	-2 074	-2 106	-2 105	-2 151	-2 195

TREND ESTIMATES										
Services credits	4 074	4 102	4 132	4 169	4 219	4 284	4 356	4 428	4 496	4 555
<i>Transportation services</i>	719	725	736	753	776	800	821	837	851	859
Freight	52	53	53	53	52	51	51	51	51	51
Passenger and other	667	672	683	701	724	748	770	786	799	808
<i>Travel services</i>	2 270	2 289	2 305	2 322	2 346	2 380	2 422	2 469	2 514	2 556
<i>Other services</i>	1 085	1 088	1 091	1 093	1 098	1 104	1 113	1 122	1 132	1 140
Services debits	-3 905	-3 926	-3 949	-3 976	-4 007	-4 042	-4 078	-4 110	-4 138	-4 160
<i>Transportation services</i>	-1 308	-1 323	-1 338	-1 353	-1 366	-1 377	-1 386	-1 393	-1 398	-1 402
Freight	-687	-698	-709	-720	-729	-736	-741	-744	-746	-746
Passenger and other	-621	-626	-629	-633	-637	-641	-645	-649	-653	-656
<i>Travel services</i>	-1 456	-1 469	-1 478	-1 483	-1 488	-1 493	-1 501	-1 511	-1 521	-1 530
<i>Other services</i>	-1 142	-1 135	-1 133	-1 139	-1 153	-1 172	-1 191	-1 206	-1 219	-1 228
Memorandum items:										
Tourism related service credits(c)	2 611	2 626	2 638	2 651	2 674	2 711	2 758	2 810	2 861	2 909
Tourism related service debits(c)	-2 031	-2 050	-2 064	-2 073	-2 081	-2 091	-2 106	-2 124	-2 143	-2 162

(a) For sign conventions, see paragraph 11 of the Explanatory Notes.

(b) In using these seasonally adjusted series, care should be exercised because of the difficulties associated with reliably estimating the seasonal pattern.

(c) For a more detailed explanation of tourism related services, see paragraphs 18 and 19 of the Explanatory Notes.

	CREDITS				DEBITS			
	Sep Qtr	Dec Qtr	Mar Qtr	Jun Qtr	Sep Qtr	Dec Qtr	Mar Qtr	Jun Qtr
	2007	2007	2008	2008	2007	2007	2008	2008
	\$m	\$m	\$m	\$m	\$m	\$m	\$m	\$m
Services	12 205	12 534	13 191	13 032	-12 055	-12 052	-11 784	-12 192
Transportation services	2 167	2 193	2 583	2 389	-3 958	-4 146	-4 012	-4 115
Passenger(c)	2 013	2 025	2 439	2 232	-1 758	-1 667	-1 600	-1 757
Freight	154	168	144	157	-2 003	-2 256	-2 197	-2 154
Other(c)	np	np	np	np	-197	-223	-215	-204
Travel services	6 842	6 935	7 444	7 182	-4 668	-4 451	-4 282	-4 436
Business	674	644	705	683	-708	-688	-774	-653
Personal	6 168	6 291	6 739	6 499	-3 960	-3 763	-3 508	-3 783
Education-related	3 400	3 008	3 441	3 861	-260	-176	-209	-201
Other	2 768	3 283	3 298	2 638	-3 700	-3 587	-3 299	-3 582
Communication services(d)	191	167	164	152	-229	-186	-219	-247
Construction services	30	40	34	40	—	—	—	—
Insurance services	181	181	181	180	-233	-233	-233	-233
Financial services	259	259	259	258	-155	-155	-155	-155
Computer and information services	384	407	325	371	-343	-413	-306	-366
Royalties and license fees	184	176	180	193	-877	-868	-886	-900
Other business services	1 622	1 809	1 587	1 879	-1 132	-1 143	-1 104	-1 240
Merchanting and other trade-related	183	253	216	258	-57	-68	-55	-54
Operational leasing	14	10	10	14	-220	-203	-184	-170
Miscellaneous business, professional and technical	1 425	1 546	1 361	1 607	-855	-872	-865	-1 016
Legal, accounting, management consulting and public relations	302	288	281	377	-106	-108	-131	-208
Advertising, market research and public opinion polling	61	87	74	90	-34	-51	-40	-67
Research and development	146	158	119	138	-38	-35	-30	-30
Architectural, engineering and other technical services	353	395	418	435	-202	-153	-231	-249
Agriculture, mining and on-site processing	95	103	58	108	-83	-81	-82	-106
Services between affiliated enterprises n.i.e.	322	341	256	297	-222	-236	-210	-219
Other	146	174	155	162	-170	-208	-141	-137
Personal, cultural, and recreational services	131	166	218	171	-268	-244	-384	-260
Audiovisual and related services	33	40	89	45	-244	-203	-301	-229
Personal, cultural and recreational services	98	126	129	126	-24	-41	-83	-31
Government services n.i.e.	214	201	216	217	-192	-213	-203	-240
Memorandum items:								
Tourism related services(e)	7 844	7 991	8 596	8 037	-6 509	-6 221	-5 976	-6 273

— nil or rounded to zero (including null cells)

np not available for publication but included in totals where applicable, unless otherwise indicated

(a) For sign conventions, see paragraph 11 of the Explanatory Notes.

(b) For more information see paragraphs 15 and 16 of the Explanatory Notes.

(c) Passenger transportation credits include other transportation services credits.

(d) Communications services includes other services n.i.e.

(e) For a more detailed explanation of tourism related services, see paragraphs 18 and 19 of the Explanatory Notes.

				Per cent of total merchandise exports(b)	12 MONTHS ENDED JUNE	
	Apr	May	Jun		
	2008	2008	2008		2007	2008
	\$m	\$m	\$m	%	\$m	\$m
MAJOR COMMODITIES						
011 Meat of bovine animals	399	461	406	2.3	4 895	4 418
041 Wheat	379	460	324	1.8	2 673	2 896
268 Wool and other animal hair	206	214	157	0.9	2 712	2 490
281 Iron ore and concentrates	1 892	2 208	2 155	12.3	15 512	19 799
285 Aluminium ore and concentrates	442	510	501	2.9	6 298	5 855
321 Coal, not agglomerated	2 288	2 757	3 557	20.2	21 845	23 747
333 Crude petroleum oils	825	998	989	5.6	7 641	9 542
334 Refined petroleum oils	305	263	268	1.5	3 012	3 566
343 Natural gas	555	514	641	3.6	5 222	5 867
684 Aluminium	404	448	464	2.6	6 157	5 457
781 Passenger motor vehicles	257	408	306	1.7	2 692	3 380
971 Gold, non-monetary	1 242	886	865	4.9	10 559	12 039

SECTION AND DIVISION OF THE SITC

0	Food and live animals					
00	Live animals other than fish, crustaceans, molluscs and aquatic invertebrates	94	76	72	0.4	957 946
01	Meat and meat preparations	585	651	559	3.2	7 079 6 549
02	Dairy products and birds' eggs	208	194	220	1.3	2 317 2 624
03	Fish (not marine mammals), crustaceans, molluscs and aquatic invertebrates, and preparations thereof	85	93	74	0.4	1 159 1 067
04	Cereals and cereal preparations	594	748	510	2.9	4 171 4 996
05	Vegetables and fruit	144	122	119	0.7	1 402 1 336
06	Sugars, sugar preparations and honey	20	21	16	0.1	253 226
07	Coffee, tea, cocoa, spices, and manufactures thereof	21	21	20	0.1	239 257
08	Feeding stuff for animals (excl. unmilled cereals)	81	70	72	0.4	788 802
09	Miscellaneous edible products and preparations	49	57	55	0.3	446 505
	<i>Total Food and live animals</i>	<i>1 881</i>	<i>2 052</i>	<i>1 717</i>	<i>9.8</i>	<i>18 811 19 308</i>
1	Beverages and tobacco					
11	Beverages	209	237	199	1.1	3 023 2 833
12	Tobacco and tobacco manufactures	10	11	8	—	147 130
	<i>Total Beverages and tobacco</i>	<i>220</i>	<i>249</i>	<i>207</i>	<i>1.2</i>	<i>3 171 2 964</i>
2	Crude materials, inedible, except fuels					
21	Hides, skins and furskins, raw	58	65	60	0.3	722 700
22	Oil seeds and oleaginous fruits	51	19	8	—	173 351
23	Crude rubber (incl. synthetic and reclaimed)	—	1	1	—	4 8
24	Cork and wood	111	126	130	0.7	1 220 1 305
25	Pulp and waste paper	23	26	25	0.1	187 267
26	Textile fibres and their wastes (not manufactured into yarn or fabric)	231	264	209	1.2	3 571 2 996
27	Crude fertilisers (excl. those of Division 56) and crude minerals (excl. coal, petroleum and precious stones)	25	31	36	0.2	556 465
28	Metalliferous ores and metal scrap	3 551	3 928	4 113	23.4	34 746 39 815
29	Crude animal and vegetable materials, n.e.s.	23	21	23	0.1	211 209
	<i>Total Crude materials, inedible, except fuels</i>	<i>4 074</i>	<i>4 480</i>	<i>4 604</i>	<i>26.2</i>	<i>41 392 46 117</i>
3	Mineral fuels, lubricants and related materials					
32	Coal, coke and briquettes	2 296	2 765	3 588	20.4	21 927 23 917
33	Petroleum, petroleum products and related materials	1 132	1 263	1 259	7.2	10 673 13 129
34	Gas, natural and manufactured	635	609	723	4.1	6 262 7 048
	<i>Total Mineral fuels, lubricants and related materials</i>	<i>4 063</i>	<i>4 636</i>	<i>5 570</i>	<i>31.7</i>	<i>38 862 44 093</i>

— nil or rounded to zero (including null cells)

(b) Per cent of total merchandise is calculated for the most recent month.

(a) Some SITC sections and divisions exclude commodities subject to a confidentiality restriction. These are included in Division 98. For more information see paragraph 17 of the Explanatory Notes.

	Apr 2008	May 2008	Jun 2008	Per cent of total merchandise exports(b)	12 MONTHS ENDED JUNE	
					2007	2008
					\$m	\$m
SECTION AND DIVISION OF THE SITC						
4	Animal and vegetable oils, fats and waxes					
41	43	49	28	0.2	234	376
42	12	19	8	—	63	110
43	8	8	8	—	66	78
	<i>Total Animal and vegetable oils, fats and waxes</i>					
	62	76	44	0.2	363	564
5	Chemicals and related products, n.e.s.					
51	6	9	8	—	109	111
52	87	76	78	0.4	775	870
53	59	49	43	0.2	624	605
54	404	299	335	1.9	3 758	3 945
55	Essential oils and resinoids and perfume materials; toilet, polishing and cleansing preparations					
	48	49	47	0.3	498	563
56	7	56	9	0.1	155	296
57	25	30	32	0.2	337	357
58	31	32	42	0.2	365	344
59	73	78	86	0.5	801	896
	<i>Total Chemicals and related products, n.e.s.</i>					
	741	680	680	3.9	7 423	7 987
6	Manufactured goods classified chiefly by material					
61	31	35	24	0.1	398	372
62	24	22	20	0.1	218	262
63	14	15	13	0.1	179	159
64	Paper, paperboard, and articles of paper pulp, of paper or of paperboard					
	74	65	63	0.4	731	708
65	Textile yarn, fabrics, made-up articles, n.e.s., and related products					
	33	35	34	0.2	411	401
66	Non-metallic mineral manufactures, n.e.s.					
	56	71	59	0.3	854	776
67	Iron and steel					
	150	156	134	0.8	1 091	1 426
68	Non-ferrous metals					
	951	1 134	1 168	6.6	13 733	12 595
69	Manufactures of metals, n.e.s.					
	104	112	92	0.5	1 023	1 089
	<i>Total Manufactured goods classified chiefly by material</i>					
	1 438	1 646	1 606	9.1	18 638	17 789
7	Machinery and transport equipment					
71	Power generating machinery and equipment					
	97	94	81	0.5	1 210	1 182
72	Machinery specialised for particular industries					
	154	155	133	0.8	1 591	1 739
73	Metal working machinery					
	15	17	16	0.1	178	210
74	General industrial machinery and equipment, n.e.s. and machine parts, n.e.s.					
	154	159	144	0.8	1 600	1 714
75	Office machines and automatic data processing machines					
	109	100	95	0.5	1 210	1 264
76	Telecommunications and sound recording and reproducing apparatus and equipment					
	62	69	57	0.3	822	765
77	Electrical machinery, apparatus, appliances, parts (incl. non-electrical counterparts of electrical domestic equip)					
	152	160	158	0.9	1 769	1 879
78	Road vehicles (incl. air-cushion vehicles)					
	367	515	405	2.3	3 730	4 609
79	Transport equipment (excl. road vehicles)					
	99	101	109	0.6	916	1 129
	<i>Total Machinery and transport equipment</i>					
	1 210	1 370	1 198	6.8	13 027	14 492

— nil or rounded to zero (including null cells)

(b) Per cent of total merchandise is calculated for the most recent month.

(a) Some SITC sections and divisions exclude commodities subject to a confidentiality restriction. These are included in Division 98. For more information see paragraph 17 of the Explanatory Notes.

				Per cent of total merchandise exports(b)	12 MONTHS ENDED JUNE	
	Apr	May	Jun		
	2008	2008	2008		2007	2008
	\$m	\$m	\$m	%	\$m	\$m
SECTION AND DIVISION OF THE SITC						
8	Miscellaneous manufactured articles					
81	Prefabricated buildings; sanitary, plumbing, heating and lighting fixtures and fittings, n.e.s.					
	11	11	13	0.1	117	136
82	Furniture, parts thereof; bedding, mattresses, mattress supports, cushions and similar stuffed furnishings					
	9	8	13	0.1	124	110
83	Travel goods, handbags and similar containers					
	3	3	2	—	29	30
84	Articles of apparel and clothing accessories					
	22	18	16	0.1	240	253
85	Footwear					
	3	4	3	—	42	45
87	Professional, scientific and controlling instruments and apparatus, n.e.s.					
	159	168	162	0.9	1 733	1 888
88	Photographic apparatus, equipment and supplies and optical goods, n.e.s.; watches and clocks					
	29	30	24	0.1	341	323
89	Miscellaneous manufactured articles, n.e.s.					
	202	209	190	1.1	2 299	2 349
	<i>Total Miscellaneous manufactured articles</i>					
	438	450	422	2.4	4 925	5 136
9	Commodities and transactions not classified elsewhere in the SITC					
93	Special transactions and commodities not classified according to kind					
	109	96	91	0.5	1 395	1 200
95	Gold coin whether or not legal tender, and other coin being legal tender					
	21	10	12	0.1	178	228
96	Coin (excl. gold coin), not being legal tender					
	—	—	—	—	—	—
97	Gold, non-monetary (excl. gold ores and concentrates)					
	1 242	886	865	4.9	10 559	12 039
98	Combined confidential items excl. some of SITC 280 (exports only) and some of SITCs 510 and 520 (imports only)					
	716	663	558	3.2	9 355	7 663
	<i>Total Commodities and transactions not classified elsewhere in the SITC</i>					
	2 088	1 655	1 526	8.7	21 488	21 130
	Total merchandise exports					
	16 214	17 293	17 574	100.0	168 099	179 579
	Balance of Payments Adjustments					
	1 337	1 285	946	. .	1 436	4 569
	Goods credits (exports) on a Balance of Payments Basis					
	17 551	18 578	18 520	. .	169 535	184 148

. . not applicable

— nil or rounded to zero (including null cells)

(a) Some SITC sections and divisions exclude commodities subject to a confidentiality restriction. These are included in Division 98. For more information see paragraph 17 of the Explanatory Notes.

(b) Per cent of total merchandise is calculated for the most recent month.

	Apr	May	Jun	Per cent	12 MONTHS	
	2008	2008	2008	of total	ENDED JUNE	
	\$m	\$m	\$m	merchandise	2007	2008
				imports(b)		
				%	\$m	\$m
MAJOR COMMODITIES						
333 Crude petroleum oils	1 478	1 299	1 564	8.9	13 022	16 646
334 Refined petroleum oils	1 154	1 762	1 249	7.1	7 645	12 063
542 Medicaments	603	564	555	3.2	6 416	6 513
641 Paper and paperboard	167	175	165	0.9	2 089	2 061
752 Automatic data processing machines	586	554	574	3.3	6 787	6 656
759 Parts and accessories of office machines	162	165	172	1.0	2 221	2 019
764 Telecommunications equipment	459	497	519	3.0	5 929	6 057
781 Passenger motor vehicles	1 342	1 438	1 290	7.4	13 242	15 084
782 Motor vehicles for the transport of goods	569	542	585	3.3	5 277	6 081
784 Parts and accessories of motor vehicles	237	241	236	1.3	2 555	2 665
792 Aircraft and associated equipment	259	260	625	3.6	2 962	4 062
971 Gold, non-monetary	729	765	616	3.5	5 311	7 316

SECTION AND DIVISION OF THE SITC

0	Food and live animals					
00	Live animals other than fish, crustaceans, molluscs and aquatic invertebrates	15	16	16	0.1	131
01	Meat and meat preparations	45	41	41	0.2	479
02	Dairy products and birds' eggs	57	57	48	0.3	448
03	Fish (not marine mammals), crustaceans, molluscs and aquatic invertebrates, and preparations thereof	88	90	87	0.5	1 187
04	Cereals and cereal preparations	55	60	60	0.3	532
05	Vegetables and fruit	126	137	110	0.6	1 332
06	Sugars, sugar preparations and honey	17	18	18	0.1	207
07	Coffee, tea, cocoa, spices, and manufactures thereof	81	78	74	0.4	856
08	Feeding stuff for animals (excl. unmilled cereals)	36	69	33	0.2	466
09	Miscellaneous edible products and preparations	115	117	105	0.6	1 288
	<i>Total food and live animals</i>	634	682	592	3.4	6 925
1	Beverages and tobacco					
11	Beverages	99	95	97	0.6	1 127
12	Tobacco and tobacco manufactures	17	22	15	0.1	229
	<i>Total beverages and tobacco</i>	116	116	112	0.6	1 356
2	Crude materials, inedible, except fuels					
21	Hides, skins and furskins, raw	—	—	—	—	3
22	Oil seeds and oleaginous fruits	5	4	4	—	84
23	Crude rubber (incl. synthetic and reclaimed)	20	21	18	0.1	180
24	Cork and wood	57	62	48	0.3	599
25	Pulp and waste paper	29	25	18	0.1	271
26	Textile fibres and their wastes (not manufactured into yarn or fabric)	12	12	11	0.1	147
27	Crude fertilisers (excl. those of Division 56) and crude minerals (excl. coal, petroleum and precious stones)	28	46	30	0.2	159
28	Metalliferous ores and metal scrap	20	28	42	0.2	698
29	Crude animal and vegetable materials, n.e.s.	25	25	23	0.1	300
	<i>Total crude materials, inedible, except fuels</i>	195	224	194	1.1	2 441
3	Mineral fuels, lubricants and related materials					
32	Coal, coke and briquettes	1	1	3	—	21
33	Petroleum, petroleum products and related materials	2 690	3 121	2 860	16.3	21 099
34	Gas, natural and manufactured	144	143	49	0.3	1 063
	<i>Total mineral fuels, lubricants and related materials</i>	2 835	3 265	2 913	16.6	22 183

— nil or rounded to zero (including null cells)

(b) Per cent of total merchandise imports is calculated for the most recent month.

(a) Some SITC sections and divisions exclude commodities subject to a confidentiality restriction. These are included in Division 98. For more information see paragraph 17 of the Explanatory Notes.

				Per cent of total merchandise imports(b)	12 MONTHS ENDED JUNE		
	Apr	May	Jun			
	2008	2008	2008		2007	2008	
	\$m	\$m	\$m	%	\$m	\$m	
SECTION AND DIVISION OF THE SITC							
4	Animal and vegetable oils, fats and waxes						
41	Animal oils and fats	2	2	1	—	26	31
42	Fixed vegetable fats and oils, crude, refined or fractionated	31	51	18	0.1	449	439
43	Fats and oils (processed), waxes and inedible mixtures or preparations, of animal or vegetable origin, n.e.s.	5	6	7	—	57	67
	<i>Total animal and vegetable oils, fats and waxes</i>	38	59	26	0.2	532	537
5	Chemicals and related products, n.e.s.						
51	Organic chemicals	311	293	301	1.7	3 342	3 459
52	Inorganic chemicals	99	120	118	0.7	1 067	1 216
53	Dyeing, tanning and colouring materials	54	55	49	0.3	593	633
54	Medicinal and pharmaceutical products	721	691	677	3.9	7 814	7 985
55	Essential oils and resinoids and perfume materials; toilet, polishing and cleansing preparations	142	132	122	0.7	1 579	1 635
56	Fertilisers (excl. crude)	314	254	156	0.9	760	1 558
57	Plastics in primary forms	146	158	150	0.9	1 664	1 765
58	Plastics in non-primary forms	111	108	99	0.6	1 295	1 299
59	Chemical materials and products, n.e.s.	183	168	158	0.9	1 775	1 891
	<i>Total chemicals and related products, n.e.s.</i>	2 080	1 979	1 829	10.4	19 888	21 439
6	Manufactured goods classified chiefly by material						
61	Leather, leather manufactures, and dressed furskins, n.e.s.	16	16	16	0.1	152	182
62	Rubber manufactures, n.e.s.	221	247	206	1.2	2 465	2 517
63	Cork and wood manufactures (excl. furniture)	53	55	49	0.3	642	663
64	Paper, paperboard, and articles of paper pulp, of paper or of paperboard	220	232	213	1.2	2 710	2 733
65	Textile yarn, fabrics, made-up articles n.e.s. and related products	208	202	187	1.1	2 452	2 501
66	Non-metallic mineral manufactures, n.e.s.	220	226	196	1.1	2 333	2 482
67	Iron and steel	329	349	370	2.1	3 817	3 720
68	Non-ferrous metals	174	143	229	1.3	1 770	2 078
69	Manufactures of metals, n.e.s.	390	432	415	2.4	4 571	4 849
	<i>Total manufactured goods classified chiefly by material</i>	1 831	1 902	1 881	10.7	20 911	21 726
7	Machinery and transport equipment						
71	Power generating machinery and equipment	406	396	373	2.1	3 717	4 446
72	Machinery specialised for particular industries	668	724	627	3.6	6 793	7 856
73	Metal working machinery	64	66	61	0.3	762	773
74	General industrial machinery and equipment, n.e.s. and machine parts, n.e.s.	820	815	744	4.2	10 111	9 738
75	Office machines and automatic data processing machines	797	768	797	4.5	9 615	9 305
76	Telecommunications and sound recording and reproducing apparatus and equipment	762	789	932	5.3	9 806	10 442
77	Electrical machinery, apparatus, appliances, parts (incl. non-electrical counterparts of electrical domestic equipment)	784	787	786	4.5	8 833	9 138
78	Road vehicles (incl. air-cushion vehicles)	2 322	2 418	2 285	13.0	23 069	26 084
79	Transport equipment (excl. road vehicles)	348	342	745	4.3	4 068	5 224
	<i>Total machinery and transport equipment</i>	6 971	7 107	7 349	41.9	76 773	83 005

— nil or rounded to zero (including null cells)

(b) Per cent of total merchandise imports is calculated for the most recent month.

(a) Some SITC sections and divisions exclude commodities subject to a confidentiality restriction. These are included in Division 98. For more information see paragraph 17 of the Explanatory Notes.

	Apr 2008	May 2008	Jun 2008	Per cent of total merchandise imports(b)	12 MONTHS ENDED JUNE		
					2007	2008	
					\$m	\$m	
SECTION AND DIVISION OF THE SITC							
8	Miscellaneous manufactured articles						
81	Prefabricated buildings; sanitary, plumbing, heating and lighting fixtures and fittings, n.e.s.						
	59	57	51	0.3	636	696	
82	Furniture, parts thereof; bedding, mattresses, mattress supports, cushions and similar stuffed furnishings						
	206	203	192	1.1	2 343	2 569	
83	Travel goods, handbags and similar containers						
	47	46	44	0.3	620	670	
84	Articles of apparel and clothing accessories						
	392	341	330	1.9	4 426	4 585	
85	Footwear						
	89	71	78	0.4	1 182	1 184	
87	Professional, scientific and controlling instruments and apparatus, n.e.s.						
	389	397	408	2.3	4 159	4 426	
88	Photographic apparatus, equipment and supplies and optical goods, n.e.s.; watches and clocks						
	104	109	109	0.6	1 348	1 351	
89	Miscellaneous manufactured articles, n.e.s.						
	740	825	764	4.4	9 487	9 564	
	<i>Total miscellaneous manufactured articles</i>	<i>2 025</i>	<i>2 049</i>	<i>11.3</i>	<i>24 201</i>	<i>25 044</i>	
9	Commodities and transactions not classified elsewhere in the SITC						
93	Special transactions and commodities not classified according to kind						
	3	4	4	—	42	42	
95	Gold coin whether or not legal tender, and other coin being legal tender						
	—	—	—	—	4	5	
96	Coin (excl. gold coin), not being legal tender						
	—	—	—	—	1	1	
97	Gold, non-monetary (excl. gold ores and concentrates)						
	729	765	616	3.5	5 311	7 316	
98	Combined confidential items excl. some of SITC 280 (exports only) and some of SITCs 510 and 520 (imports only)						
	39	39	34	0.2	235	518	
	<i>Total commodities and transactions not classified elsewhere in the SITC</i>	<i>772</i>	<i>808</i>	<i>3.7</i>	<i>5 592</i>	<i>7 881</i>	
	Total merchandise imports	17 498	18 191	100.0	180 801	201 614	
	Balance of Payments Adjustment	220	344	433	. .	2 726	3 321
	Goods Debits (imports) on a Balance of Payments Basis	17 718	18 535	17 960	. .	183 527	204 935

. . not applicable

— nil or rounded to zero (including null cells)

(a) Some SITC sections and divisions exclude commodities subject to a confidentiality restriction. These are included in Division 98. For more information see paragraph 17 of the Explanatory Notes.

(b) Per cent of total merchandise imports is calculated for the most recent month.

	EXPORTS				IMPORTS				BALANCE OF MERCHANDISE TRADE	
	2007-08	June 2008	12	12	2007-08	June 2008	12	12	2007-08	2008
			Months Ended June 2007	Months Ended June 2008			Months Ended June 2007	Months Ended June 2008		
\$m	\$m	\$m	\$m	\$m	\$m	\$m	\$m			
Belgium	1 344	142	1 318	1 344	1 729	137	1 607	1 729	-385	-385
Brazil	927	95	853	927	1 041	70	859	1 041	-114	-114
Canada	1 622	110	1 768	1 622	2 188	194	2 077	2 188	-566	-566
China	26 569	2 737	22 805	26 569	30 993	2 471	27 140	30 993	-4 424	-4 424
Denmark	177	15	189	177	895	75	1 138	895	-718	-718
Egypt(b)	310	16	337	310	17	1	17	17	293	293
Fiji	379	35	383	379	122	9	148	122	257	257
Finland	1 138	110	1 593	1 138	945	94	848	945	193	193
France	1 477	171	1 364	1 477	4 989	508	3 910	4 989	-3 512	-3 512
Germany	1 447	149	1 444	1 447	10 572	902	9 274	10 572	-9 125	-9 125
Hong Kong (Sar of China)	2 837	270	3 038	2 837	1 381	105	1 419	1 381	1 456	1 456
India	9 299	842	10 103	9 299	1 606	152	1 314	1 606	7 693	7 693
Indonesia	3 975	342	4 241	3 975	4 516	365	4 647	4 516	-541	-541
Iran	161	13	208	161	54	16	41	54	107	107
Iraq	94	—	96	94	23	—	36	23	71	71
Ireland	241	12	209	241	2 006	193	2 120	2 006	-1 764	-1 764
Israel	254	48	188	254	685	50	640	685	-431	-431
Italy	1 417	49	1 742	1 417	4 898	369	4 869	4 898	-3 481	-3 481
Japan	34 563	3 953	32 623	34 563	19 668	1 692	17 400	19 668	14 895	14 895
Korea, Republic of	14 154	1 614	13 086	14 154	6 170	470	6 014	6 170	7 984	7 984
Kuwait	576	55	493	576	363	—	231	363	213	213
Malaysia	3 422	336	3 103	3 422	8 167	673	6 603	8 167	-4 745	-4 745
Mexico	544	34	837	544	1 235	118	1 102	1 235	-691	-691
Netherlands	2 783	339	2 976	2 783	1 556	136	1 494	1 556	1 226	1 226
New Zealand	9 442	805	9 435	9 442	7 039	629	5 615	7 039	2 403	2 403
Pakistan	490	17	321	490	154	11	151	154	336	336
Papua New Guinea	1 617	173	1 524	1 617	2 737	302	2 215	2 737	-1 120	-1 120
Philippines	1 281	70	1 056	1 281	763	60	753	763	518	518
Saudi Arabia	2 248	157	2 025	2 248	909	49	946	909	1 340	1 340
Singapore	5 309	417	4 637	5 309	13 109	1 277	10 126	13 109	-7 800	-7 800
South Africa	2 409	149	2 320	2 409	1 497	134	1 402	1 497	912	912
Spain	891	82	1 254	891	1 996	153	1 625	1 996	-1 105	-1 105
Sweden	425	52	351	425	2 461	200	2 287	2 461	-2 036	-2 036
Switzerland	945	16	1 130	945	2 128	213	1 916	2 128	-1 183	-1 183
Taiwan	6 406	643	6 191	6 406	4 141	315	4 409	4 141	2 265	2 265
Thailand	4 653	569	4 256	4 653	8 802	913	7 222	8 802	-4 149	-4 149
Turkey	589	44	527	589	404	30	437	404	184	184
United Arab Emirates	3 126	280	2 393	3 126	2 512	303	1 747	2 512	614	614
United Kingdom	8 313	657	6 146	8 313	8 499	580	7 407	8 499	-186	-186
United States of America	10 587	865	9 803	10 587	24 325	2 209	24 908	24 325	-13 739	-13 739
Viet Nam	1 821	97	1 629	1 821	5 130	578	4 504	5 130	-3 309	-3 309
Other Countries	9 319	993	8 105	9 319	9 189	771	8 186	9 189	130	130
Total	179 579	17 574	168 099	179 579	201 614	17 527	180 801	201 614	-22 035	-22 035
APEC	129 984	13 175	121 024	129 984	143 165	12 630	128 462	143 165	-13 181	-13 181
ASEAN	20 584	1 840	19 051	20 584	41 583	3 870	34 969	41 583	-20 999	-20 999
Developing Countries	94 508	9 262	87 416	94 508	97 156	8 409	84 720	97 156	-2 648	-2 648
Least Developed Countries	1 611	158	1 567	1 611	243	16	246	243	1 368	1 368
European Union(c)	20 342	1 865	19 144	20 342	43 231	3 575	39 018	43 231	-22 889	-22 889
OECD	92 720	9 283	88 259	92 720	107 359	9 189	99 398	107 359	-14 639	-14 639

— nil or rounded to zero (including null cells)

(a) See Time series spreadsheets for details of all countries.

(b) Exports of Alumina to Egypt are excluded from country total and included in the 'Other Countries' category.

(c) The European Union includes 27 member countries.

	2007-08	June 2008	12 MONTHS ENDED JUN	
			2007	2008
			\$m	\$m
EXPORTS (a)				
New South Wales	29 958	2 834	28 062	29 958
Victoria	20 543	1 783	20 049	20 543
Queensland	34 898	4 190	35 439	34 898
South Australia	10 344	906	9 016	10 344
Western Australia	68 134	6 389	60 509	68 134
Tasmania	3 620	312	3 713	3 620
Northern Territory	4 533	515	4 013	4 533
Australian Capital Territory	5	—	8	5
State not available for publication(b)	895	111	809	895
Re-exports	6 651	533	6 479	6 651
Total exports	179 579	17 574	168 099	179 579
IMPORTS				
New South Wales	75 928	6 440	69 791	75 928
Victoria	56 045	4 965	51 326	56 045
Queensland	32 328	2 976	27 198	32 328
South Australia	7 340	588	6 584	7 340
Western Australia	26 691	2 309	22 125	26 691
Tasmania	686	67	614	686
Northern Territory	2 581	179	2 846	2 581
Australian Capital Territory	14	3	317	14
Total imports	201 614	17 527	180 801	201 614

— nil or rounded to zero (including null cells)

(a) State in which the final stage of production or manufacture occurs.

(b) Exports of Alumina to Bahrain, Egypt and Iceland are excluded from the state totals and included in 'State not available for publication category'.

PERIOD AVERAGE EXCHANGE RATES (a): Per Australian dollar

<i>Period</i>	<i>United States dollar</i>	<i>UK pound sterling</i>	<i>Euro</i>	<i>Japanese yen</i>	<i>Trade-weighted index of value of the A\$(b)</i>
FINANCIAL YEAR					
2005-06	0.7474	0.4205	0.6143	85.90	63.3
2006-07	0.7863	0.4066	0.6018	93.21	64.8
2007-08	0.8968	0.4479	0.6099	98.63	69.7
MONTHS					
2007					
April	0.8263	0.4156	0.6117	98.17	67.1
May	0.8252	0.4157	0.6103	99.58	67.0
June	0.8423	0.4238	0.6274	103.34	68.5
July	0.8675	0.4266	0.6325	105.47	69.7
August	0.8282	0.4123	0.6083	96.63	66.8
September	0.8464	0.4196	0.6088	97.34	67.7
October	0.8984	0.4397	0.6316	104.04	71.0
November	0.8987	0.4335	0.6121	99.88	70.0
December	0.8726	0.4314	0.5987	97.88	68.2
2008					
January	0.8815	0.4479	0.5993	95.16	68.2
February	0.9128	0.4647	0.6192	97.84	70.2
March	0.9260	0.4622	0.5964	93.36	69.8
April	0.9298	0.4695	0.5899	95.30	70.0
May	0.9491	0.4828	0.6098	98.90	72.2
June	0.9508	0.4840	0.6116	101.75	72.8

- (a) These exchange rates and the trade-weighted index are derived using rates provided by the Reserve Bank of Australia in respect of each trading day.
- (b) May 1970 = 100. The Trade-weighted index is reweighted annually on 1 October and on special occasions as required.

EXPLANATORY NOTES

INTRODUCTION

1 This publication presents preliminary estimates of Australia's international trade in goods and services on a balance of payments basis and merchandise import and export statistics on a recorded trade basis.

2 Merchandise trade statistics on a recorded trade basis are compiled from information submitted by exporters and importers or their agents to the Australian Customs Service (ACS). Adjustments for coverage, timing and valuation are made to recorded trade data to convert them to a balance of payments basis. The main source for services data is the quarterly Survey of International Trade in Services.

3 More comprehensive quarterly estimates of Australia's trade in goods and services, together with comprehensive details of Australia's balance of payments are included in the quarterly publication, *Balance of Payments and International Investment Position, Australia* (cat. no. 5302.0). Detailed monthly statistics on merchandise trade are available on Time Series Spreadsheets or by subscription to tailored services.

CONCEPTS, SOURCES AND METHODS

4 The conceptual framework used in compiling Australia's merchandise trade statistics can be found in *International Merchandise Trade, Australia: Concepts, Sources and Methods, 2001* (cat. no. 5489.0).

5 The conceptual framework used in compiling Australia's balance of payments statistics is based on the Fifth Edition of the International Monetary Fund's *Balance of Payments Manual* (BPM5,1993). Descriptions of the underlying concepts and structure of the balance of payments and the sources, methods and terms used in compiling the estimates are presented in *Balance of Payments and International Investment Position, Australia: Concepts, Sources and Methods, 1998* (cat. no. 5331.0). To bring merchandise trade statistics on a recorded trade basis to a balance of payments basis, timing adjustments are made to ensure that the transaction is recorded in the period in which ownership changed, rather than in the period in which the transaction was recorded by ACS. Adjustments are also made to account for the change of ownership of goods not included in merchandise trade statistics. Chapter 6 of cat. no. 5331.0 provides more detail on the relationship between statistics on international merchandise trade on a recorded trade basis and on a balance of payments basis.

6 Both of the Concepts, Sources and Methods publications are available to download for free from the ABS website. Select *Methods, Classifications, Concepts & Standards*, then choose *ABS concepts, classifications and statistical standards* and then the catalogue numbers as above.

SEASONAL ADJUSTMENT

7 The estimates of international trade in goods and services on a balance of payments basis are seasonally adjusted, however the merchandise exports and imports statistics on a recorded trade basis are not. Monthly original estimates are volatile, being subject to calendar-related and large irregular influences. Seasonally adjusted estimates are derived by estimating and removing from the original series systematic calendar related effects, such as seasonal, trading day, length of month and moving holiday influences. Seasonal adjustment does not aim to remove the irregular or non-seasonal influences which may be present in any particular month. These irregular influences may reflect both random economic events and difficulties of statistical recording.

8 The seasonally adjusted statistics in this publication use the concurrent seasonal adjustment technique and Autoregressive Integrated Moving Average (ARIMA) Modelling to estimate factors for the current and previous months. Under concurrent seasonal adjustment, the estimates of seasonal factors are fine tuned as new original estimates become available each period. The seasonally adjusted estimates are subject to revisions at each reference month as the estimates of seasonal factors are improved. For more information on seasonal adjustment methods, see *Information Paper: An Introductory Course on Time Series Analysis, Jan 2005* (cat. no. 1346.0.55.001), *Time Series Analysis*

EXPLANATORY NOTES *continued*

SEASONAL ADJUSTMENT

continued

Frequently Asked Questions, 2003 (cat. no. 1346.0.55.002), alternatively contact the Assistant Director, Time Series Analysis on (02) 6252 6345 or e-mail <time.series.analysis@abs.gov.au>.

ARIMA MODELLING

9 ARIMA modelling relies on the characteristics of the series being analysed to project future period data. ARIMA modelling is used on a case-by-case basis where it results in reduced revisions to seasonally adjusted series when subsequent data become available. The projected values are temporary, intermediate values, that are only used internally to improve the estimation of the seasonal factors. The projected data do not affect the original estimates and are discarded at the end of the seasonal adjustment process. The ARIMA model is assessed as part of the annual reanalysis and, following the 2007 annual re-analysis, 89% of trade in goods and services time series use an ARIMA model. For more information on the details of ARIMA modelling see *Feature article: Use of ARIMA modelling to reduce revisions* in the October 2004 issue of *Australian Economic Indicators* (cat. no. 1350.0).

TREND ESTIMATES

10 The month-to-month movements of the seasonally adjusted estimates may not be reliable indicators of trend behaviour because they include irregular or non-seasonal movements. Trend estimates are derived by applying a 13-term Henderson moving average to the seasonally adjusted series. The use of a 13-term Henderson average can result in revisions to the estimates for the most recent six months as additional observations become available. Revisions can also occur because of changes in the original data and as a result of the re-estimation of the seasonal factors. For more information on trend estimates methods, see *Information Paper: A Guide to Interpreting Time Series - Monitoring Trends* (cat. no. 1349.0), alternatively contact the Assistant Director, Time Series Analysis on (02) 6252 6345 or e-mail <time.series.analysis@abs.gov.au>.

SIGN CONVENTION

11 In keeping with balance of payments conventions, where statistics are on a balance of payments basis, credit entries (exports) are shown without sign and debit items (imports) are shown as negative entries. For statistics on a recorded trade basis, both imports and exports are shown without sign. The calculation of percentage changes on balance of payments debit items are made without regard to sign. References to balance of payments debit items in Key Figures, Key Points, and Analysis and Comments are also made without regard to sign.

COMMODITY BREAKDOWNS OF GOODS

12 For details of the classification used for goods exports on a balance of payments basis (credits), see table 6.6 in *Balance of Payments and International Investment Position, Australia: Concepts, Sources and Methods, 1998* (cat. no. 5331.0).

13 Details of the classification of goods imports on a balance of payments basis (debits) are provided in table 6.7 in cat. no. 5331.0.

14 The recorded trade statistics shown in tables 12 and 13 are classified by the Standard International Trade Classification (SITC). The first section of tables 12 and 13 show the most significant commodities (by value) at the SITC 3 digit level. Imports and exports of goods at a more detailed level are available from the Time Series spreadsheets.

COMMODITY BREAKDOWNS OF SERVICES

15 The quarterly detailed services data published in table 11 are consistent with the monthly aggregates shown in table 9.

16 Monthly indicators for many of the services components that are only surveyed quarterly are not available. In particular, the Freight and Other transportation components of Total services credits are not available for publication on a monthly basis. The estimates for these items shown in table 9 are therefore derived by dividing the quarterly estimate by three. Where quarterly survey data are not available, freight debits

EXPLANATORY NOTES *continued*

COMMODITY BREAKDOWNS OF SERVICES *continued*

are derived directly from imports data for the reference month as a difference between total merchandise cost, insurance and freight (CIF) and free on board (FOB), adjusted to reflect timing and processing adjustments. For freight credits and other transportation credits and debits, estimates are derived by extrapolating the last month's data by an average of movements for the same month over the three previous years.

CONFIDENTIALITY OF MERCHANDISE TRADE STATISTICS

17 The release of statistics for certain merchandise trade commodities is restricted in order to prevent the identification of the activities of an individual business, where this is requested by the business concerned. These restrictions do not affect the total value of exports and imports, but they can affect statistics at the country, state and commodity levels. For information on the confidentiality restrictions applied to the merchandise trade statistics in this publication, refer to the current *International merchandise trade: Confidential Commodities List (CCL)* (cat. no. 5372.0.55.001) which can be accessed from ABS web site.

TOURISM RELATED SERVICES

18 The tourism related services memorandum items provide timely indicators of the movements in tourism related activities, not an absolute measure of the level of these activities. These series are not compiled on a balance of payments conceptual basis. However, they do provide a reasonable approximation of world tourism related activities.

19 The memorandum items have been derived by re-aggregating relevant components of the international trade in services series of the balance of payments accounts. The tourism related indicator has been derived by combining total travel services (business, education-related and other personal travel), passenger fares, and the air transport component of other transportation services which relates to agency fees and commission receipts.

SERVICES BY STATE AND BY PARTNER COUNTRY

20 Annual services data by state and by partner country are released twice yearly. Calendar year data are usually released with the March issue of this publication and financial year data are released with the September issue. Refer to Time series data for details.

21 Services credits are classified by the state of provision, while services debits are classified by the state of consumption. The state allocations for transportation, travel and communication services are based on a number of indicators including merchandise trade statistics by state, overseas passenger arrivals and departures by state of clearance and data provided by the Department of Education, Science and Training. The allocation for other services (about 25% of all trade in services) is primarily based on the location of the business reporting the information, which serves as a proxy for the state of provision/consumption of that service. The data should be used with care but are considered suitable for analysis over time.

22 A comprehensive explanation of the data sources used and the methodology applied in the compilation of partner country statistics is provided in Chapter 17 of *Balance of Payments and International Investment Position, Australia - Concepts, Sources and Methods* (cat. no. 5331.0). Approximately 7% of total services credits and 5% of total services debits for 2006–07 are either confidential, or unable to be allocated to individual countries.

ABS DATA AVAILABLE

23 More detailed balance of payments and recorded merchandise trade data, including forward seasonal factors are available as time series spreadsheets or data cubes from the ABS website.

24 More detailed merchandise trade data by commodity, country and state, and statistics included in this and related publications are available on request. Inquiries should be made to the National Information and Referral Service as shown on the back of this publication.

EXPLANATORY NOTES *continued*

RELATED PRODUCTS AND PUBLICATIONS

25 Users may also wish to refer to the following publications which can be downloaded free of charge from the ABS web site:

- *Balance of Payments and International Investment Position, Australia* (cat. no. 5302.0) – issued quarterly
- *International Merchandise Imports, Australia* (cat. no. 5439.0) – issued monthly
- *International Trade Price Indexes, Australia* (cat. no. 6457.0) – issued quarterly
- *Balance of Payments and International Investment Position, Australia: Concepts, Sources and Methods* (cat. no. 5331.0)
- *Information Paper: Quality of Australian Balance of Payments Statistics* (cat. no. 5342.0)
- *International Merchandise Trade, Australia: Concepts, Sources and Methods* (cat. no. 5489.0)
- *A Guide to Australian Balance of Payments and International Investment Position Statistics* (cat. no. 5362.0.55.001).

26 Current publications produced by the ABS are listed in the *Catalogue of Publications and Products* (cat. no. 1101.0). The Catalogue is available from any ABS office or from this site. The ABS also issues a daily Release Advice on the web site which details products to be released in the week ahead.

CAUTIONARY NOTE

27 The tables in this publication are presented on two bases. Tables 1–11 contain estimates of Australia's international trade in goods and services which have been adjusted for coverage, valuation and timing to a balance of payments basis. Tables 12–15 contain estimates of merchandise exports and imports based on Australian Customs Service records. Paragraph 5 of the Explanatory Notes provides an explanation of the difference between these bases.

ROUNDING

28 Where figures have been rounded, discrepancies may occur between sums of the component items and totals. Percentage movements are calculated from data at the level of precision presented in this publication (i.e. \$m) except for international merchandise trade tables.

ABBREVIATIONS

\$b	billion (thousand million) dollars
\$m	million dollars
ABS	Australian Bureau of Statistics
APEC	Asia Pacific Economic Co-operation
ASEAN	Association of South-East Asian Nations
n.e.s.	not elsewhere specified
n.i.e.	not included elsewhere
OECD	Organisation for Economic Co-operation and Development
SAR	Special Administrative Region
SITC	Standard International Trade Classification

APPENDIX RELATED ARTICLES

<i>Article</i>	<i>Source(a)</i>	<i>Issue</i>
Investment		
Foreign ownership of equity	5302.0	Sep qtr 2007
Foreign currency exposure	5308.0	Mar qtr 2005
Kangaroo bonds	5302.0	Sep qtr 2004
Gross external debt	5302.0	Sep qtr 2003
Balance of payments		
International comparison of balance of payments statistics	(b) 5363.0	1999–2000
Merchandise trade		
Number and characteristics of Australian exporters	5368.0.55.006	2006–2007
Export and import invoice currencies, 2006	5368.0	Dec 2007
100 years of international trade statistics	5368.0	Oct 2007
New methodology for deriving counts of Australian exports	5368.0	Feb 2006
Australia's Importers, 2003–04	5368.0	Nov 2004
Australia's Exporters, 2003–04	5368.0	Oct 2004
Australia's trade with the USA	5368.0	Mar 2004
Foreign ownership of Australian exporters and importers	5496.0.55.001	2002–2003
Major commodities traded by Australia, 1991 to 2000	(b) 5422.0	Dec qtr 2000
Trade in services		
International trade in services by partner country, 2006, preliminary	5368.0	Dec 2006
Changes to International trade in services statistics, August 2006	5368.0	Aug 2006
Changes to International trade in services travel statistics	5368.0	Aug 2005
Finance		
Impact of 2003–2004 farm season on Australian production	1350.0	Oct 2003
Recent trends in construction and first home buyers finance	5609.0	Mar 2002
Household sector data in the financial accounts	5232.0	Mar qtr 2002
Technical information		
Impact of introducing Revision 4 of the Standard International Trade Classification	5368.0.55.010	2008
Changes to international trade statistics July 2008	5368.0.55.009	2007–2008
Changes on 1 January 2007 to Statistical Codes in the AHECC and the Customs Tariff	1233.0.55.001	Nov 2006
ABS implementation in January 2007 of revisions to international trade classifications, 2007	5368.0.55.005	June 2006
Revised treatment of Goods for Processing in Merchandise Trade and Balance of Payments Statistics	5368.0	May 2006
Impact of Customs and ABS changes on import statistics from October 2005	5439.0	Oct 2005
ABS management of the impact of the implementation of the imports component of the New Customs System	5439.0	Aug 2005
Changes to country and port classifications	5368.0	May 2003
Implementation of New Customs Systems	5368.0	Aug 2004
The effect of customs changes on export statistics	5422.0	Jun qtr 2002
Data confidentiality	5422.0	Dec qtr 1999

(a) In the ABS web site home page, select Key Products; Papers & Articles; ABS Papers/Feature Articles; Papers/Feature Articles by Catalogue Number.

(b) This article can be found in pdf format by referring to the Downloads page of the specified issue of this publication on the ABS web site.

FOR MORE INFORMATION . . .

INTERNET **www.abs.gov.au** the ABS website is the best place for data from our publications and information about the ABS.

INFORMATION AND REFERRAL SERVICE

Our consultants can help you access the full range of information published by the ABS that is available free of charge from our website. Information tailored to your needs can also be requested as a 'user pays' service. Specialists are on hand to help you with analytical or methodological advice.

PHONE 1300 135 070

EMAIL client.services@abs.gov.au

FAX 1300 135 211

POST Client Services, ABS, GPO Box 796, Sydney NSW 2001

FREE ACCESS TO STATISTICS

All statistics on the ABS website can be downloaded free of charge.

WEB ADDRESS www.abs.gov.au